

Anti-ACTA1 antibody [ARC1913] (STJ11101812)

STJ11101812

GENERAL INFORMATION

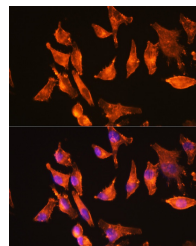
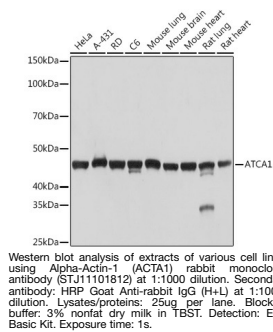
Product Type	Primary antibodies
Short Description	Rabbit monoclonal antibody anti-ACTA1 is suitable for use in Western Blot and Immunofluorescence.
Applications	WB, IF
Host/Source	Rabbit
Reactivity	Human, Mouse, Rat

PRODUCT PROPERTIES

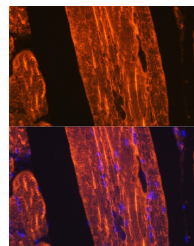
Clonality	Monoclonal
Clone ID	ARC1913
Concentration	
Conjugation	Unconjugated
Purification	Affinity purification
Dilution Range	WB 1:500-1:2000 IF 1:50-1:200
Formulation	PBS containing 0.02% Sodium Azide, 0.05% BSA, 50% Glycerol, pH7.3.
Isotype	IgG
Storage Instruction	Store in a freezer at -20°C and avoid freeze-thaw cycles.

TARGET INFORMATION

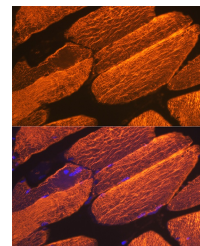
Gene ID	58
Gene Symbol	ACTA1
Uniprot ID	ACTS_HUMAN
Immunogen	A synthesized peptide derived from human Alpha-Actin-1 (ACTA1)
Immunogen Region	
Specificity	
Immunogen Sequence	



Immunofluorescence analysis of HeLa cells using Alpha-Actin-1 (ACTA1) rabbit monoclonal antibody (STJ11101812) at dilution of 1:100 (40x lens). Blue: DAPI for nuclear staining.



Immunofluorescence analysis of rat skeletal muscle using Alpha-Actin-1 (ACTA1) rabbit monoclonal antibody (STJ11101812) at dilution of 1:100 (40x lens). Blue: DAPI for nuclear staining.



Immunofluorescence analysis of mouse skeletal muscle using Alpha-Actin-1 (ACTA1) rabbit monoclonal antibody (STJ11101812) at dilution of 1:100 (40x lens). Blue: DAPI for nuclear staining.

This product is suitable for in-vitro studies under the RESEARCH USE ONLY [RUO] licence. This product must not be used as for diagnostic or other medical purposes.
St John's Laboratory Ltd, Knowledge Dock Business Centre, University Way, London, E16 2RD | Tel: 0208 223 3081