

Anti-KDM3B antibody (1059-1283) (STJ11101810)

STJ11101810

GENERAL INFORMATION

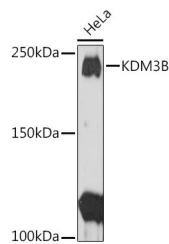
Product Type	Primary antibodies
Short Description	Rabbit polyclonal antibody anti-KDM3B (1059-1283) is suitable for use in Western Blot and Immunohistochemistry.
Applications	WB, IHC
Host/Source	Rabbit
Reactivity	Human

PRODUCT PROPERTIES

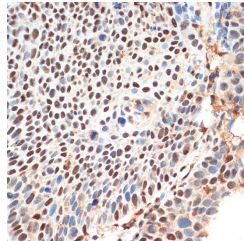
Clonality	Polyclonal
Clone ID	
Concentration	
Conjugation	Unconjugated
Purification	Affinity purification
Dilution Range	WB 1:500-1:2000 IHC 1:50-1:200
Formulation	PBS containing 0.02% Sodium Azide, 50% Glycerol, pH7.3.
Isotype	IgG
Storage Instruction	Store in a freezer at -20°C and avoid freeze-thaw cycles.

TARGET INFORMATION

Gene ID	51780
Gene Symbol	KDM3B
Uniprot ID	KDM3B_HUMAN
Immunogen	Recombinant fusion protein containing a sequence corresponding to amino acids 1059-1283 of human KDM3B (NP_057688.2).
Immunogen Region	1059-1283
Specificity	
Immunogen Sequence	



Western blot analysis of extracts of HeLa cells, using KDM3B rabbit polyclonal antibody (STJ11101810) at 1:1000 dilution. Secondary antibody: HRP Goat Anti-rabbit IgG (H+L) at 1:10000 dilution. Lysates/proteins: 25µg per lane. Blocking buffer: 3% nonfat dry milk in TBST. Detection: ECL Basic Kit. Exposure time: 90s.



Immunohistochemistry of paraffin-embedded human esophageal cancer using KDM3B rabbit polyclonal antibody (STJ11101810) at dilution of 1:100 (40x lens).