

Anti-PIM1 antibody [ARC0175] (STJ11101771)

STJ11101771

GENERAL INFORMATION

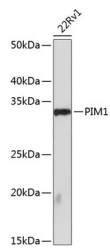
| | |
|--------------------------|--|
| Product Type | Primary antibodies |
| Short Description | Rabbit monoclonal antibody anti-PIM1 is suitable for use in Western Blot and Immunohistochemistry. |
| Applications | WB, IHC |
| Host/Source | Rabbit |
| Reactivity | Human, Mouse, Rat |

PRODUCT PROPERTIES

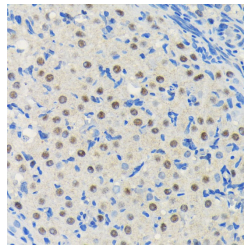
| | |
|----------------------------|--|
| Clonality | Monoclonal |
| Clone ID | ARC0175 |
| Concentration | |
| Conjugation | Unconjugated |
| Purification | Affinity purification |
| Dilution Range | WB 1:500-1:2000 IHC 1:50-1:200 |
| Formulation | PBS containing 0.02% Sodium Azide, 0.05% BSA, 50% Glycerol, pH7.3. |
| Isotype | IgG |
| Storage Instruction | Store in a freezer at -20°C and avoid freeze-thaw cycles. |

TARGET INFORMATION

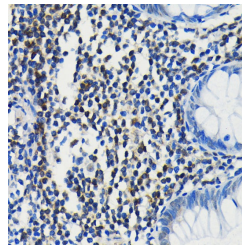
| | |
|---------------------------|--|
| Gene ID | 5292 |
| Gene Symbol | PIM1 |
| Uniprot ID | PIM1_HUMAN |
| Immunogen | A synthesized peptide derived from human PIM1. |
| Immunogen Region | |
| Specificity | |
| Immunogen Sequence | |



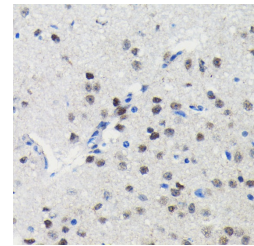
Western blot analysis of extracts of 22Rv1 cells, using PIM1 antibody (STJ11101771) at 1:10000 dilution. Secondary antibody: HRP-Coat Anti-rabbit IgG (H+L) at 1:10000 dilution. Lysates/proteins: 25ug per lane. Blocking buffer: 3% nonfat dry milk in TBST. Detection: ECL Basic Kit. Exposure time: 90s.



Immunohistochemistry of paraffin-embedded rat ovary using PIM1 antibody (STJ11101771) at dilution of 1:100 (40x lens).



Immunohistochemistry of paraffin-embedded human colon using PIM1 antibody (STJ11101771) at dilution of 1:100 (40x lens).



Immunohistochemistry of paraffin-embedded mouse brain using PIM1 antibody (STJ11101771) at dilution of 1:100 (40x lens).

This product is suitable for in-vitro studies under the RESEARCH USE ONLY [RUO] licence. This product must not be used as for diagnostic or other medical purposes.
St John's Laboratory Ltd, Knowledge Dock Business Centre, University Way, London, E16 2RD | Tel: 0208 223 3081