

Anti-SP1 antibody [ARC0128] (STJ11101745)

STJ11101745

GENERAL INFORMATION

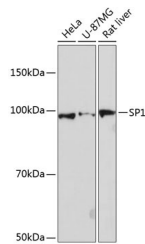
| | |
|--------------------------|---|
| Product Type | Primary antibodies |
| Short Description | Rabbit monoclonal antibody anti-SP1 is suitable for use in Western Blot, Immunohistochemistry and Immunofluorescence. |
| Applications | WB, IHC, IF |
| Host/Source | Rabbit |
| Reactivity | Human, Mouse, Rat |

PRODUCT PROPERTIES

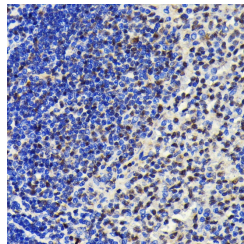
| | |
|----------------------------|---|
| Clonality | Monoclonal |
| Clone ID | ARC0128 |
| Concentration | |
| Conjugation | Unconjugated |
| Purification | Affinity purification |
| Dilution Range | WB 1:500-1:2000 IHC 1:50-1:200 IF 1:50-1:200 ChIP 1:50-1:200 |
| Formulation | PBS containing 0.02% Sodium Azide, 0.05% BSA, 50% Glycerol, pH7.3. |
| Isotype | IgG |
| Storage Instruction | Store in a freezer at -20°C and avoid freeze-thaw cycles. |

TARGET INFORMATION

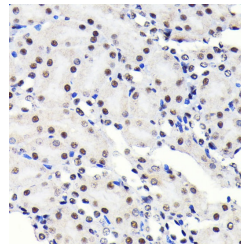
| | |
|---------------------------|---|
| Gene ID | 6667 |
| Gene Symbol | SP1 |
| Uniprot ID | SP1_HUMAN |
| Immunogen | A synthesized peptide derived from human SP1. |
| Immunogen Region | |
| Specificity | |
| Immunogen Sequence | |



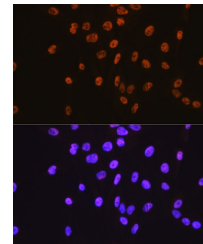
Western blot analysis of extracts of various cell lines, using SP1 antibody (STJ11101745) at 1:1000 dilution. Secondary antibody: HRP Goat Anti-rabbit IgG (H+L) at 1:10000 dilution. Lysates/proteins: 25ug per lane. Blocking buffer: 3% nonfat dry milk in TBST. Detection: ECL Basic Kit. Exposure time: 90s.



Immunohistochemistry of paraffin-embedded rat spleen using SP1 antibody (STJ11101745) at dilution of 1:100 (40x lens).



Immunohistochemistry of paraffin-embedded mouse kidney using SP1 antibody (STJ11101745) at dilution of 1:100 (40x lens).



Immunofluorescence analysis of C6 cells using SP1 antibody (STJ11101745). Blue: DAPI for nuclear staining.

This product is suitable for in-vitro studies under the RESEARCH USE ONLY [RUO] licence. This product must not be used as for diagnostic or other medical purposes.
St John's Laboratory Ltd, Knowledge Dock Business Centre, University Way, London, E16 2RD | Tel: 0208 223 3081