

Anti-XPO1 antibody [ARC0104] (STJ11101735)

STJ11101735

GENERAL INFORMATION

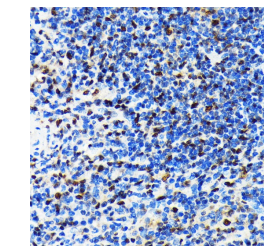
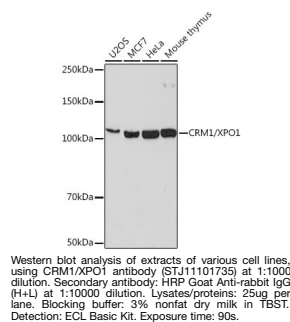
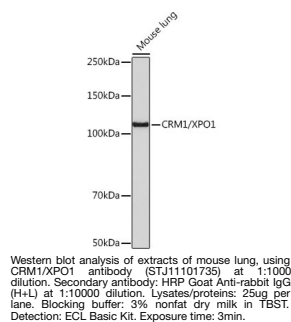
Product Type	Primary antibodies
Short Description	Rabbit monoclonal antibody anti-CRM1 is suitable for use in Western Blot, Immunohistochemistry and Immunofluorescence.
Applications	WB, IHC, IF
Host/Source	Rabbit
Reactivity	Human, Mouse, Rat

PRODUCT PROPERTIES

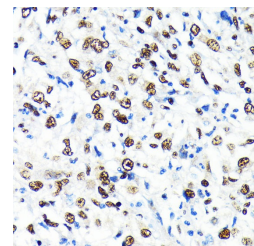
Clonality	Monoclonal
Clone ID	ARC0104
Concentration	
Conjugation	Unconjugated
Purification	Affinity purification
Dilution Range	WB 1:500-1:2000 IHC 1:50-1:200 IF 1:50-1:200
Formulation	PBS containing 0.02% Sodium Azide, 0.05% BSA, 50% Glycerol, pH7.3.
Isotype	IgG
Storage Instruction	Store in a freezer at -20°C and avoid freeze-thaw cycles.

TARGET INFORMATION

Gene ID	7514
Gene Symbol	XPO1
Uniprot ID	XPO1_HUMAN
Immunogen	A synthesized peptide derived from human CRM1/XPO1.
Immunogen Region	
Specificity	
Immunogen Sequence	



Immunohistochemistry of paraffin-embedded rat spleen using CRM1/XPO1 antibody (STJ11101735) at dilution of 1:100 (40x lens).



Immunohistochemistry of paraffin-embedded human liver cancer using CRM1/XPO1 antibody (STJ11101735) at dilution of 1:100 (40x lens).

This product is suitable for in-vitro studies under the RESEARCH USE ONLY [RUO] licence. This product must not be used as for diagnostic or other medical purposes.
St John's Laboratory Ltd, Knowledge Dock Business Centre, University Way, London, E16 2RD | Tel: 0208 223 3081