

Anti-TRIM28 antibody [ARC0047] (STJ11101703)

STJ11101703

GENERAL INFORMATION

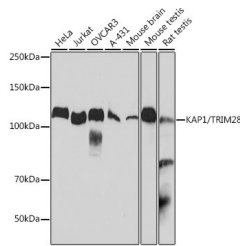
Product Type	Primary antibodies
Short Description	Rabbit monoclonal antibody anti-KAP1 is suitable for use in Western Blot, Immunohistochemistry and Immunoprecipitation.
Applications	WB, IHC, IP
Host/Source	Rabbit
Reactivity	Human, Mouse, Rat

PRODUCT PROPERTIES

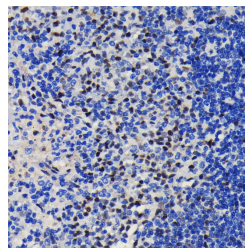
Clonality	Monoclonal
Clone ID	ARC0047
Concentration	
Conjugation	Unconjugated
Purification	Affinity purification
Dilution Range	WB 1:500-1:2000 IHC 1:50-1:200 IP 1:50-1:200
Formulation	PBS containing 0.02% Sodium Azide, 0.05% BSA, 50% Glycerol, pH7.3.
Isotype	IgG
Storage Instruction	Store in a freezer at -20°C and avoid freeze-thaw cycles.

TARGET INFORMATION

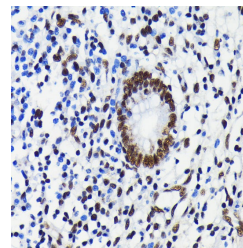
Gene ID	10155
Gene Symbol	TRIM28
Uniprot ID	TIF1B_HUMAN
Immunogen	A synthesized peptide derived from human KAP1/TRIM28.
Immunogen Region	
Specificity	
Immunogen Sequence	



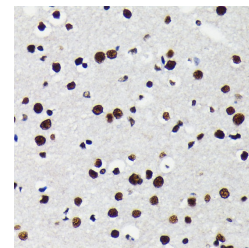
Western blot analysis of extracts of various cell lines, using KAP1/TRIM28 antibody (STJ11101703) at 1:1000 dilution. Secondary antibody: HRP Goat Anti-rabbit IgG (HRP) at 1:10000 dilution. Lysates/proteins: 25µg per lane. Blocking buffer: 3% nonfat dry milk in TBS-T. Detection: ECL Basic Kit. Exposure time: 10s.



Immunohistochemistry of paraffin-embedded rat spleen using KAP1/TRIM28 antibody (STJ11101703) at dilution of 1:100 (40x lens).



Immunohistochemistry of paraffin-embedded human appendix using KAP1/TRIM28 antibody (STJ11101703) at dilution of 1:100 (40x lens).



Immunohistochemistry of paraffin-embedded mouse brain using KAP1/TRIM28 antibody (STJ11101703) at dilution of 1:100 (40x lens).

This product is suitable for in-vitro studies under the RESEARCH USE ONLY [RUO] licence. This product must not be used as for diagnostic or other medical purposes.
St John's Laboratory Ltd, Knowledge Dock Business Centre, University Way, London, E16 2RD | Tel: 0208 223 3081