

Anti-TOMM20 antibody (20-145) [ARC5002] (STJ11101675)

STJ11101675

GENERAL INFORMATION

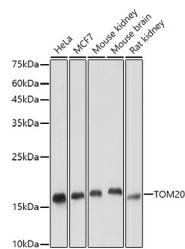
Product Type	Primary antibodies
Short Description	Rabbit monoclonal antibody anti-TOM20 (20-145) is suitable for use in Western Blot, Immunohistochemistry, Immunofluorescence and Immunoprecipitation.
Applications	WB, IHC, IF, IP
Host/Source	Rabbit
Reactivity	Human, Mouse, Rat

PRODUCT PROPERTIES

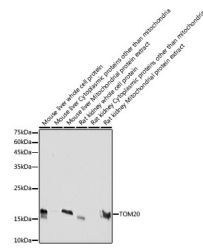
Clonality	Monoclonal
Clone ID	ARC5002
Concentration	Unconjugated
Purification	Affinity purification
Dilution Range	WB 1:1000-1:50000 IHC 1:50-1:1000 IF 1:50-1:1000 IP 1:20-1:50
Formulation	PBS containing 0.09% Sodium Azide, 0.05% BSA, 50% Glycerol, pH7.3.
Isotype	IgG
Storage Instruction	Store in a freezer at -20°C and avoid freeze-thaw cycles.

TARGET INFORMATION

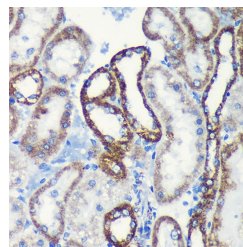
Gene ID	9804
Gene Symbol	TOMM20
Uniprot ID	TOM20_HUMAN
Immunogen	Recombinant fusion protein containing a sequence corresponding to amino acids 20-145 of human TOM20 (NP_055580.1).
Immunogen Region	20-145
Specificity	
Immunogen Sequence	



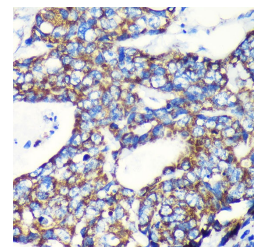
Western blot analysis of extracts of various cell lines, using TOM20 antibody (STJ11101675) at 1:5000 dilution. Secondary antibody: HRP Goat Anti-rabbit IgG (H+L) at 1:10000 dilution. Lysates/proteins: 25ug per lane. Blocking buffer: 3% nonfat dry milk in TBST. Detection: ECL Basic Kit. Exposure time: 60s.



Western blot analysis of extracts of various cell lines, using TOM20 antibody (STJ11101675) at 1:5000 dilution. Secondary antibody: HRP Goat Anti-rabbit IgG (H+L) at 1:10000 dilution. Lysates/proteins: 25ug per lane. Blocking buffer: 3% nonfat dry milk in TBST. Detection: ECL Basic Kit. Exposure time: 10s.



Immunohistochemistry of paraffin-embedded Rat kidney using TOM20 antibody (STJ11101675) at dilution of 1:200 (40x lens). Perform microwave antigen retrieval with 10 mM PBS buffer pH 7.2 before commencing with immunohistochemistry staining protocol.



Immunohistochemistry of paraffin-embedded Human colon carcinoma using TOM20 antibody (STJ11101675) at dilution of 1:200 (40x lens). Perform microwave antigen retrieval with 10 mM PBS buffer pH 7.2 before commencing with immunohistochemistry staining protocol.

This product is suitable for in-vitro studies under the RESEARCH USE ONLY [RUO] licence. This product must not be used as for diagnostic or other medical purposes.
St John's Laboratory Ltd, Knowledge Dock Business Centre, University Way, London, E16 2RD | Tel: 0208 223 3081