

## Anti-CD4 antibody [ARC0328] (STJ11101556)

STJ11101556

### GENERAL INFORMATION

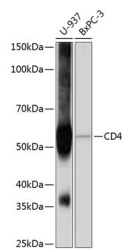
<b>Product Type</b>	Primary antibodies
<b>Short Description</b>	Rabbit monoclonal antibody anti-CD4 is suitable for use in Western Blot, Immunohistochemistry and Flow Cytometry.
<b>Applications</b>	WB, IHC, FC
<b>Host/Source</b>	Rabbit
<b>Reactivity</b>	Human

### PRODUCT PROPERTIES

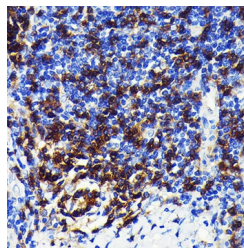
<b>Clonality</b>	Monoclonal
<b>Clone ID</b>	ARC0328
<b>Concentration</b>	
<b>Conjugation</b>	Unconjugated
<b>Purification</b>	Affinity purification
<b>Dilution Range</b>	WB 1:500-1:2000 IHC 1:50-1:200 FC 1:50-1:200
<b>Formulation</b>	PBS containing 0.02% Sodium Azide, 0.05% BSA, 50% Glycerol, pH7.3.
<b>Isotype</b>	IgG
<b>Storage Instruction</b>	Store in a freezer at -20°C and avoid freeze-thaw cycles.

### TARGET INFORMATION

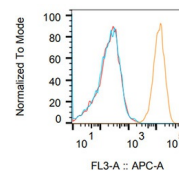
<b>Gene ID</b>	920
<b>Gene Symbol</b>	CD4
<b>Uniprot ID</b>	CD4_HUMAN
<b>Immunogen</b>	A synthesized peptide derived from human CD4
<b>Immunogen Region</b>	
<b>Specificity</b>	
<b>Immunogen Sequence</b>	



Western blot analysis of extracts of various cell lines, using CD4 antibody (STJ11101556) at 1:1000 dilution. Secondary antibody: HRP Goat Anti-rabbit IgG (H+L) at 1:10000 dilution. Lysates/proteins: 25ug per lane. Blocking buffer: 3% nonfat dry milk in TBST. Detection: ECL Basic Kit. Exposure time: 3min.

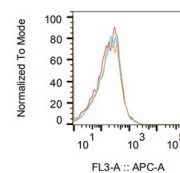


Immunohistochemistry of paraffin-embedded human lung cancer using CD4 rabbit monoclonal antibody (STJ11101556) at dilution of 1:100 (40x lens). Perform microwave antigen retrieval with 10 mM PBS buffer pH 7.2 before commencing with immunohistochemistry staining protocol.



Sample Name	Subset Name	Count
THP-1-CD4 mAb fcs	Single Cells	7597
THP-1-negative control fcs	Single Cells	8441
THP-1-blank fcs	Single Cells	8691

Flow cytometry: THP-1 cells were stained with rabbit IgG isotype control (AC042, 10 ug/ml, blue line) or CD4 rabbit monoclonal antibody (STJ11101556, 10 ug/ml orange line), followed by goat anti-rabbit polyclonal antibody APC (1:500 dilution) staining. Non-fluorescently stained THP-1 cells was used as blank control (red line).



Sample Name	Subset Name	Count
K562-CD4 mAb fcs	Single Cells	5793
K562-negative control fcs	Single Cells	5357
K562-blank fcs	Single Cells	5771

Flow cytometry: K-562 cells were stained with rabbit IgG isotype control (AC042, 10 ug/ml, blue line) or CD4 rabbit monoclonal antibody (STJ11101556, 10 ug/ml orange line), followed by goat anti-rabbit polyclonal antibody APC (1:500 dilution) staining. Non-fluorescently stained K-562 cells was used as blank control (red line).

This product is suitable for in-vitro studies under the RESEARCH USE ONLY [RUO] licence. This product must not be used as for diagnostic or other medical purposes.  
St John's Laboratory Ltd, Knowledge Dock Business Centre, University Way, London, E16 2RD | Tel: 0208 223 3081