

Anti-CD3E antibody [ARC0327] (STJ11101555)

STJ11101555

GENERAL INFORMATION

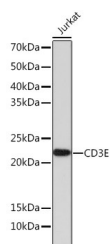
Product Type	Primary antibodies
Short Description	Rabbit monoclonal antibody anti-CD3 epsilon is suitable for use in Western Blot, Immunohistochemistry and Flow Cytometry.
Applications	WB, IHC, FC
Host/Source	Rabbit
Reactivity	Human, Mouse, Rat

PRODUCT PROPERTIES

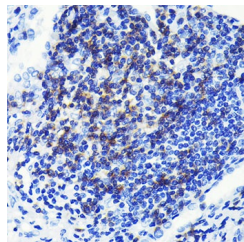
Clonality	Monoclonal
Clone ID	ARC0327
Concentration	
Conjugation	Unconjugated
Purification	Affinity purification
Dilution Range	WB 1:500-1:2000 IHC 1:50-1:200 FC 1:50-1:200
Formulation	PBS containing 0.02% Sodium Azide, 0.05% BSA, 50% Glycerol, pH7.3.
Isotype	IgG
Storage Instruction	Store in a freezer at -20°C and avoid freeze-thaw cycles.

TARGET INFORMATION

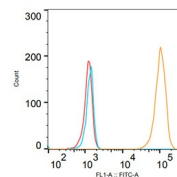
Gene ID	916
Gene Symbol	CD3E
Uniprot ID	CD3E_HUMAN
Immunogen	A synthesized peptide derived from human CD3E
Immunogen Region	
Specificity	
Immunogen Sequence	



Western blot analysis of extracts of Jurkat cells, using CD3E antibody (STJ11101555) at 1:1000 dilution. Secondary antibody: HRP Goat Anti-rabbit IgG (H+L) at 1:10000 dilution. Lysates/proteins: 25ug per lane. Blocking buffer: 3% nonfat dry milk in TBST. Detection: ECL Enhanced Kit. Exposure time: 3min.

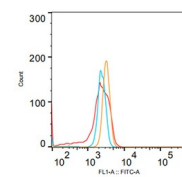


Immunohistochemistry of paraffin-embedded human lung cancer using CD3E rabbit monoclonal antibody (STJ11101555) at dilution of 1:100 (40x lens). Perform microwave antigen retrieval with 10 mM PBS buffer pH 7.2 before commencing with immunohistochemistry staining protocol.



Sample Name	Isotype Name	Count
CD3E Jurkat CD3E Is	Single Cells	2661
CD3E Jurkat IgG Is	Single Cells	2753
CD3E Jurkat Is	Single Cells	2375

Flow cytometry: Jurkat cells were stained with rabbit IgG isotype control (AC042; 10 ug/ml, blue line) or CD3E rabbit monoclonal antibody (STJ11101555; 2.5 ug/ml orange line) followed by goat anti-rabbit polyclonal antibody FITC (1:200 dilution) staining. Non-fluorescently stained Jurkat cells was used as blank control (red line).



Sample Name	Isotype Name	Count
CD3E Raji CD3E Is	Single Cells	3058
CD3E Raji IgG Is	Single Cells	3058
CD3E Raji Is	Single Cells	3058

Flow cytometry: Raji cells were stained with rabbit IgG isotype control (AC042; 10 ug/ml, blue line) or CD3E rabbit monoclonal antibody (STJ11101555; 2.5 ug/ml orange line) followed by goat anti-rabbit polyclonal antibody FITC (1:200 dilution) staining. Non-fluorescently stained Raji cells was used as blank control (red line).

This product is suitable for in-vitro studies under the RESEARCH USE ONLY [RUO] licence. This product must not be used as for diagnostic or other medical purposes.
St John's Laboratory Ltd, Knowledge Dock Business Centre, University Way, London, E16 2RD | Tel: 0208 223 3081