

Anti-CD14 antibody [ARC0353] (STJ11101549)

STJ11101549

GENERAL INFORMATION

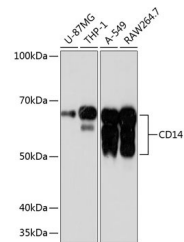
Product Type	Primary antibodies
Short Description	Rabbit monoclonal antibody anti-CD14 is suitable for use in Western Blot, Immunohistochemistry and Immunofluorescence.
Applications	WB, IHC, IF
Host/Source	Rabbit
Reactivity	Human, Mouse

PRODUCT PROPERTIES

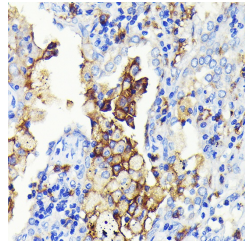
Clonality	Monoclonal
Clone ID	ARC0353
Concentration	
Conjugation	Unconjugated
Purification	Affinity purification
Dilution Range	WB 1:500-1:2000 IHC 1:50-1:200 IF 1:50-1:200
Formulation	PBS containing 0.02% Sodium Azide, 0.05% BSA, 50% Glycerol, pH7.3.
Isotype	IgG
Storage Instruction	Store in a freezer at -20°C and avoid freeze-thaw cycles.

TARGET INFORMATION

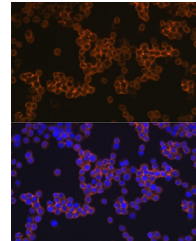
Gene ID	929
Gene Symbol	CD14
Uniprot ID	CD14_HUMAN
Immunogen	A synthesized peptide derived from human CD14
Immunogen Region	
Specificity	
Immunogen Sequence	



Western blot analysis of extracts of various cell lines, using CD14 antibody (STJ11101549) at 1:1000 dilution. Secondary antibody: HRP Goat Anti-rabbit IgG (H+L) at 1:10000 dilution. Lysates/proteins: 25ug per lane. Blocking buffer: 3% nonfat dry milk in TBST. Detection: ECL Basic Kit. Exposure time: 3min.



Immunohistochemistry of paraffin-embedded human lung cancer using CD14 rabbit monoclonal antibody (STJ11101549) at dilution of 1:100 (40x lens). Perform microwave antigen retrieval with 10 mM PBS buffer pH 7.2 before commencing with immunohistochemistry staining protocol.



Immunofluorescence analysis of THP-1 cells using CD14 rabbit monoclonal antibody (STJ11101549) at dilution of 1:100 (40x lens). Blue: DAPI for nuclear staining.

This product is suitable for in-vitro studies under the RESEARCH USE ONLY [RUO] licence. This product must not be used as for diagnostic or other medical purposes.
St John's Laboratory Ltd, Knowledge Dock Business Centre, University Way, London, E16 2RD | Tel: 0208 223 3081