

Anti-TMX2 antibody (128-296) (STJ11101445)

STJ11101445

GENERAL INFORMATION

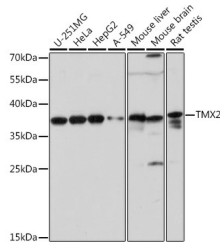
Product Type	Primary antibodies
Short Description	Rabbit polyclonal antibody anti-TMX2 (128-296) is suitable for use in Western Blot, Immunohistochemistry and Immunofluorescence.
Applications	WB, IHC, IF
Host/Source	Rabbit
Reactivity	Human, Mouse, Rat

PRODUCT PROPERTIES

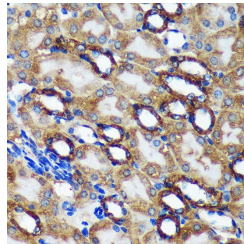
Clonality	Polyclonal
Clone ID	
Concentration	
Conjugation	Unconjugated
Purification	Affinity purification
Dilution Range	WB 1:500-1:2000 IHC 1:50-1:200 IF 1:50-1:200
Formulation	PBS containing 0.02% Sodium Azide, 50% Glycerol, pH7.3.
Isotype	IgG
Storage Instruction	Store in a freezer at -20°C and avoid freeze-thaw cycles.

TARGET INFORMATION

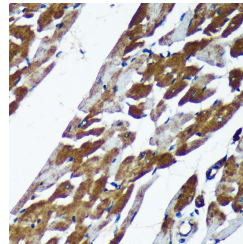
Gene ID	51075
Gene Symbol	TMX2
Uniprot ID	TMX2_HUMAN
Immunogen	Recombinant fusion protein containing a sequence corresponding to amino acids 128-296 of human TMX2 (NP_057043.1).
Immunogen Region	128-296
Specificity	
Immunogen Sequence	



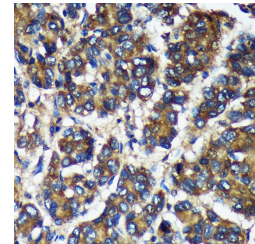
Western blot analysis of extracts of various cell lines, using TMX2 polyclonal antibody (STJ11101445) at 1:1000 dilution. Secondary antibody: HRP Goat Anti-rabbit IgG (H+L) at 1:10000 dilution. Lysates/proteins: 25ug per lane. Blocking buffer: 3% nonfat dry milk in TBST. Detection: ECL Basic Kit. Exposure time: 30s.



Immunohistochemistry of paraffin-embedded mouse kidney using TMX2 rabbit polyclonal antibody (STJ11101445) at dilution of 1:100 (40x lens).



Immunohistochemistry of paraffin-embedded Rat heart using TMX2 rabbit polyclonal antibody (STJ11101445) at dilution of 1:100 (40x lens).



Immunohistochemistry of paraffin-embedded Human liver cancer using TMX2 rabbit polyclonal antibody (STJ11101445) at dilution of 1:100 (40x lens).

This product is suitable for in-vitro studies under the RESEARCH USE ONLY [RUO] licence. This product must not be used as for diagnostic or other medical purposes.
St John's Laboratory Ltd, Knowledge Dock Business Centre, University Way, London, E16 2RD | Tel: 0208 223 3081