

Anti-ATP1A1 antibody [ARC0674] (STJ11101388)

STJ11101388

GENERAL INFORMATION

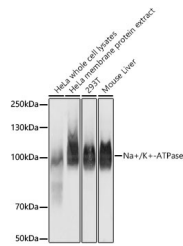
Product Type	Primary antibodies
Short Description	Rabbit monoclonal antibody anti-Na ⁺ /K ⁺ -ATPase is suitable for use in Western Blot, Immunohistochemistry and Immunofluorescence.
Applications	WB, IHC, IF
Host/Source	Rabbit
Reactivity	Human, Mouse, Rat

PRODUCT PROPERTIES

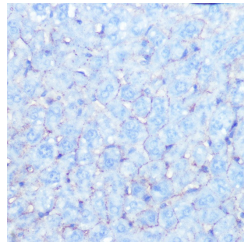
Clonality	Monoclonal
Clone ID	ARC0674
Concentration	
Conjugation	Unconjugated
Purification	Affinity purification
Dilution Range	WB 1:500-1:2000 IHC 1:50-1:200 IF 1:50-1:200
Formulation	PBS containing 0.02% Sodium Azide, 0.05% BSA, 50% Glycerol, pH7.3.
Isotype	IgG
Storage Instruction	Store in a freezer at -20°C and avoid freeze-thaw cycles.

TARGET INFORMATION

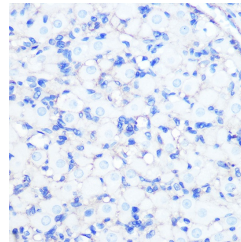
Gene ID	476
Gene Symbol	ATP1A1
Uniprot ID	AT1A1_HUMAN
Immunogen	A synthesized peptide derived from human Na ⁺ /K ⁺ -ATPase
Immunogen Region	
Specificity	
Immunogen Sequence	



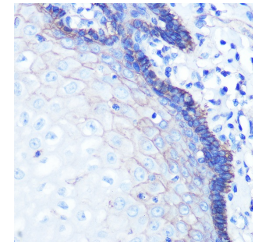
Western blot analysis of extracts of various cell lines, using Na⁺/K⁺-ATPase antibody (STJ11101388) at 1:100000 dilution. Secondary antibody: HRP Goat Anti-rabbit IgG (H+L) at 1:10000 dilution. Lysates/proteins: 25ug per lane. Blocking buffer: 3% nonfat dry milk in TBST. Detection: ECL Basic Kit. Exposure time: 10s.



Immunohistochemistry of paraffin-embedded mouse liver using Na⁺/K⁺-ATPase rabbit monoclonal antibody (STJ11101388) at dilution of 1:100 (40x lens).



Immunohistochemistry of paraffin-embedded rat ovary using Na⁺/K⁺-ATPase rabbit monoclonal antibody (STJ11101388) at dilution of 1:100 (40x lens).



Immunohistochemistry of paraffin-embedded human esophageal using Na⁺/K⁺-ATPase rabbit monoclonal antibody (STJ11101388) at dilution of 1:100 (40x lens).