

## Anti-CSK antibody [ARC1835] (STJ11101252)

STJ11101252

### GENERAL INFORMATION

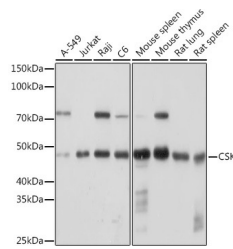
|                          |   |
|--------------------------|---|
| <b>Product Type</b>      | Primary antibodies  |
| <b>Short Description</b> | Rabbit monoclonal antibody anti-CSK is suitable for use in Western Blot and Immunohistochemistry. |
| <b>Applications</b>      | WB, IHC   |
| <b>Host/Source</b>       | Rabbit  |
| <b>Reactivity</b>        | Human, Mouse, Rat   |

### PRODUCT PROPERTIES

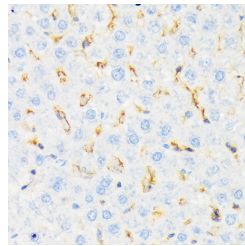
|                            |  |
|----------------------------|--|
| <b>Clonality</b>           | Monoclonal   |
| <b>Clone ID</b>            | ARC1835  |
| <b>Concentration</b>       |  |
| <b>Conjugation</b>         | Unconjugated   |
| <b>Purification</b>        | Affinity purification  |
| <b>Dilution Range</b>      | WB 1:500-1:2000<br>IHC 1:50-1:200                                  |
| <b>Formulation</b>         | PBS containing 0.02% Sodium Azide, 0.05% BSA, 50% Glycerol, pH7.3. |
| <b>Isotype</b>             | IgG  |
| <b>Storage Instruction</b> | Store in a freezer at -20°C and avoid freeze-thaw cycles.          |

### TARGET INFORMATION

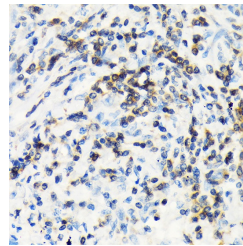
|                           |  |
|---------------------------|--|
| <b>Gene ID</b>            | 1445   |
| <b>Gene Symbol</b>        | CSK  |
| <b>Uniprot ID</b>         | CSK_HUMAN                                    |
| <b>Immunogen</b>          | A synthesized peptide derived from human CSK |
| <b>Immunogen Region</b>   |  |
| <b>Specificity</b>        |  |
| <b>Immunogen Sequence</b> |  |



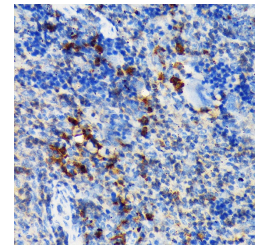
Western blot analysis of extracts of various cell lines, using CSK rabbit monoclonal antibody (STJ11101252) at 1:1000 dilution. Secondary antibody: HRP Goat Anti-rabbit IgG (H+L) at 1:10000 dilution. Lysates/proteins: 25µg per lane. Blocking buffer: 3% nonfat dry milk in TBST. Detection: ECL Basic Kit. Exposure time: 30s.



Immunohistochemistry of paraffin-embedded rat liver using CSK rabbit monoclonal antibody (STJ11101252) at dilution of 1:100 (40x lens).



Immunohistochemistry of paraffin-embedded human lung cancer using CSK rabbit monoclonal antibody (STJ11101252) at dilution of 1:100 (40x lens).



Immunohistochemistry of paraffin-embedded mouse spleen using CSK rabbit monoclonal antibody (STJ11101252) at dilution of 1:100 (40x lens).

This product is suitable for in-vitro studies under the RESEARCH USE ONLY [RUO] licence. This product must not be used as for diagnostic or other medical purposes.  
St John's Laboratory Ltd, Knowledge Dock Business Centre, University Way, London, E16 2RD | Tel: 0208 223 3081