

Anti-SARS-COV-2 N Protein antibody (STJ11101210)
STJ11101210

GENERAL INFORMATION

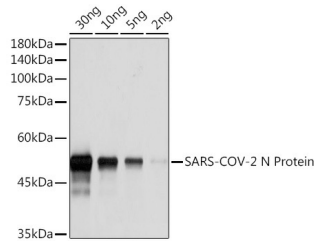
| | |
|--------------------------------|--|
| Product Type | Primary antibodies |
| Short Description | Rabbit monoclonal anti-SARS-COV-2 N Protein antibody is suitable for use in Western Blot, ELISA, Flow Cytometry, Immunohistochemistry, Immunofluorescence and Immunoprecipitation. |
| Background Applications | WB, ELISA, FC, IHC, IF, IP |
| Host/Source | Rabbit |
| Reactivity | SARS-CoV-2 |

PRODUCT PROPERTIES

| | |
|----------------------------|---|
| Clonality | Monoclonal |
| Clone ID | |
| Concentration | |
| Conjugation | Unconjugated |
| Purification | Affinity purification |
| Dilution Range | WB: 1:1000-1:5000 ELISA: 1:1000-1:5000 FCM: 1:50-1:200 IHC: 1:50-1:200 IF: 1:50-1:200 IP: 1:50-1:200 |
| Formulation | PBS with 0.02% sodium azide, 50% glycerol, pH7.3. |
| Isotype | IgG |
| Storage Instruction | Store at 4°C. Avoid freeze/thaw cycles. |

TARGET INFORMATION

| | |
|---------------------------|---|
| Gene ID | |
| Gene Symbol | |
| Uniprot ID | |
| Immunogen | Recombinant fusion protein of SARS-COV-2 Nucleoprotein. |
| Immunogen Region | |
| Specificity | |
| Immunogen Sequence | |



Western blot analysis of SARS-COV-2 N Protein using SARS-COV-2 N Protein Rabbit pAb (STJ11101210) at 1:1000 dilution. Secondary antibody: HRP Goat Anti-Rabbit IgG (H+L) at 1:10000 dilution. Blocking buffer: 3% nonfat dry milk in TBST. Detection: ECL Basic Kit. Exposure time: 5s.

This product is suitable for in-vitro studies under the RESEARCH USE ONLY [RUO] licence. This product must not be used as for diagnostic or other medical purposes.
St John's Laboratory Ltd, Knowledge Dock Business Centre, University Way, London, E16 2RD | Tel: 0208 223 3081 | Fax: 0207 681 2580