

Anti-KANK1 antibody (900-1000) (STJ11101206)

STJ11101206

GENERAL INFORMATION

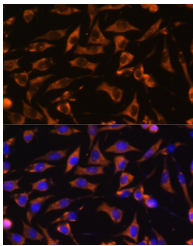
Product Type	Primary antibodies
Short Description	Rabbit polyclonal antibody anti-KANK1 (900-1000) is suitable for use in Western Blot and Immunofluorescence.
Applications	WB, IF
Host/Source	Rabbit
Reactivity	Human, Mouse

PRODUCT PROPERTIES

Clonality	Polyclonal
Clone ID	
Concentration	
Conjugation	Unconjugated
Purification	Affinity purification
Dilution Range	WB 1:500-1:2000 IF 1:50-1:200
Formulation	PBS containing 0.02% Sodium Azide, 50% Glycerol, pH7.3.
Isotype	IgG
Storage Instruction	Store in a freezer at -20°C and avoid freeze-thaw cycles.

TARGET INFORMATION

Gene ID	23189
Gene Symbol	KANK1
Uniprot ID	KANK1_HUMAN
Immunogen	A synthetic peptide corresponding to a sequence within amino acids 900-1000 of human KANK1 (NP_055973.2).
Immunogen Region	900-1000
Specificity	
Immunogen Sequence	



Immunofluorescence analysis of L929 cells using KANK1 antibody (STJ11101206) at dilution of 1:100. Blue: DAPI for nuclear staining.

This product is suitable for in-vitro studies under the RESEARCH USE ONLY [RUO] licence. This product must not be used as for diagnostic or other medical purposes.
St John's Laboratory Ltd, Knowledge Dock Business Centre, University Way, London, E16 2RD | Tel: 0208 223 3081