

Anti-Phospho-MAPT-Thr212/Ser214 antibody (STJ11101159)

STJ11101159

GENERAL INFORMATION

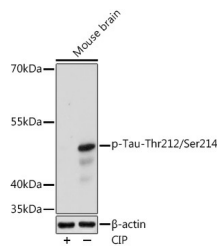
Product Type	Primary antibodies
Short Description	Rabbit polyclonal antibody anti-Phospho-Tau-Thr212/Ser214 is suitable for use in Western Blot.
Applications	WB
Host/Source	Rabbit
Reactivity	Human, Mouse

PRODUCT PROPERTIES

Clonality	Polyclonal
Clone ID	
Concentration	
Conjugation	Unconjugated
Purification	Affinity purification
Dilution Range	WB 1:500-1:2000
Formulation	PBS containing 0.02% Sodium Azide, 50% Glycerol, pH7.3.
Isotype	IgG
Storage Instruction	Store in a freezer at -20°C and avoid freeze-thaw cycles.

TARGET INFORMATION

Gene ID	4137
Gene Symbol	MAPT
Uniprot ID	TAU_HUMAN
Immunogen	A phospho specific peptide corresponding to residues surrounding Thr212/Ser214 of human Tau.
Immunogen Region	
Specificity	
Immunogen Sequence	



Western blot analysis of extracts of mouse brain, using Phospho-Tau-Thr212/Ser214 antibody (STJ11101159) at 1:1000 dilution, mouse brain were treated by CIP (20uL/400uL) at 37 °C for 1 hour. Secondary antibody: HRP Goat Anti-rabbit IgG (F+L) at 1:10000 dilution. Lysates/proteins: 25ug per lane. Blocking buffer: 3% nonfat dry milk in TBST. Detection: ECL Basic Kit. Exposure time: 10s.

This product is suitable for in-vitro studies under the RESEARCH USE ONLY [RUO] licence. This product must not be used as for diagnostic or other medical purposes.
 St John's Laboratory Ltd, Knowledge Dock Business Centre, University Way, London, E16 2RD | Tel: 0208 223 3081