

Anti-Phospho-RPS6KB1-S371 antibody (STJ11101156)

STJ11101156

GENERAL INFORMATION

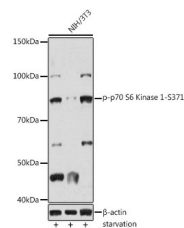
Product Type	Primary antibodies
Short Description	Rabbit polyclonal antibody anti-Phospho-RPS6KB1-S371 is suitable for use in Western Blot.
Applications	WB
Host/Source	Rabbit
Reactivity	Human, Mouse

PRODUCT PROPERTIES

Clonality	Polyclonal
Clone ID	
Concentration	
Conjugation	Unconjugated
Purification	Affinity purification
Dilution Range	WB 1:500-1:2000
Formulation	PBS containing 0.02% Sodium Azide, 50% Glycerol, pH7.3.
Isotype	IgG
Storage Instruction	Store in a freezer at -20°C and avoid freeze-thaw cycles.

TARGET INFORMATION

Gene ID	6198
Gene Symbol	RPS6KB1
Uniprot ID	KS6B1_HUMAN
Immunogen	A phospho specific peptide corresponding to residues surrounding S371 of human RPS6KB1.
Immunogen Region	
Specificity	
Immunogen Sequence	



Western blot analysis of extracts of NIH/3T3, using Phospho-p70 S6 Kinase 1-S371 antibody (STJ11101156) at 1:1000 dilution. NIH/3T3 cells were treated by 10% FBS at 37 °C for 30 minutes after serum-starvation overnight. NIH/3T3 cells were treated by EGF (100 ng/ml) at 37 °C for 30 minutes after serum-starvation overnight. Secondary antibody: HRP Goat Anti-rabbit IgG (H+L) at 1:10000 dilution. Lysates/proteins: 25µg per lane. Blocking buffer: 3% nonfat dry milk in TBST. Detection: ECL Basic Kit. Exposure time: 30s.

This product is suitable for in-vitro studies under the RESEARCH USE ONLY [RUO] licence. This product must not be used as for diagnostic or other medical purposes.
 St John's Laboratory Ltd, Knowledge Dock Business Centre, University Way, London, E16 2RD | Tel: 0208 223 3081