

Anti-Phospho-EZR/RDX/MSN-T567/T564/T558 antibody (STJ11101155)

STJ11101155

GENERAL INFORMATION

| | |
|--------------------------|---|
| Product Type | Primary antibodies |
| Short Description | Rabbit polyclonal antibody anti-Phospho-EZR/RDX/MSN-T567/T564/T558 is suitable for use in Western Blot. |
| Applications | WB |
| Host/Source | Rabbit |
| Reactivity | Human, Rat |

PRODUCT PROPERTIES

| | |
|----------------------------|---|
| Clonality | Polyclonal |
| Clone ID | |
| Concentration | |
| Conjugation | Unconjugated |
| Purification | Affinity purification |
| Dilution Range | WB 1:500-1:2000 |
| Formulation | PBS containing 0.02% Sodium Azide, 50% Glycerol, pH7.3. |
| Isotype | IgG |
| Storage Instruction | Store in a freezer at -20°C and avoid freeze-thaw cycles. |

TARGET INFORMATION

Gene ID [7430](#)
[5962](#)
[4478](#)

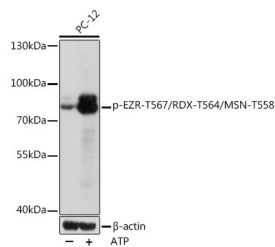
[EZR](#)
[RDX](#)

Uniprot ID [EZRI_HUMAN](#)
[RADL_HUMAN](#)
[MOES_HUMAN](#)

<

Immunogen A phospho specific peptide corresponding to residues surrounding T567/T564/T558 of human EZR/RDX/MSN.

Immunogen Region
Specificity
Immunogen Sequence



Western blot analysis of extracts of PC-12 cells, using Phospho-EZR-T567/RDX-T564/MSN-T558 rabbit polyclonal antibody (STJ11101155) at 1:1000 dilution. PC-12 cells were treated by ATP (5 mM) at 30 °C for 1 hour. Secondary antibody: HRP Goat Anti-rabbit IgG (H+L) at 1:10000 dilution. Lysates/proteins: 25ug per lane. Blocking buffer: 3% BSA. Detection: ECL Basic Kit. Exposure time: 10s.

This product is suitable for in-vitro studies under the RESEARCH USE ONLY [RUO] licence. This product must not be used as for diagnostic or other medical purposes.
 St John's Laboratory Ltd, Knowledge Dock Business Centre, University Way, London, E16 2RD | Tel: 0208 223 3081