

## Anti-Phospho-RIPK1-S166 antibody (STJ11101149)

STJ11101149

### GENERAL INFORMATION

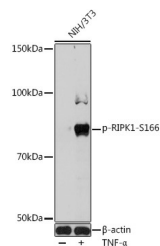
|                          |   |
|--------------------------|---|
| <b>Product Type</b>      | Primary antibodies  |
| <b>Short Description</b> | Rabbit polyclonal antibody anti-Phospho-RIPK1-S166 is suitable for use in Western Blot. |
| <b>Applications</b>      | WB  |
| <b>Host/Source</b>       | Rabbit  |
| <b>Reactivity</b>        | Human, Mouse  |

### PRODUCT PROPERTIES

|                            |   |
|----------------------------|---|
| <b>Clonality</b>           | Polyclonal  |
| <b>Clone ID</b>            |   |
| <b>Concentration</b>       |   |
| <b>Conjugation</b>         | Unconjugated  |
| <b>Purification</b>        | Affinity purification                                     |
| <b>Dilution Range</b>      | WB 1:500-1:2000   |
| <b>Formulation</b>         | PBS containing 0.02% Sodium Azide, 50% Glycerol, pH7.3.   |
| <b>Isotype</b>             | IgG   |
| <b>Storage Instruction</b> | Store in a freezer at -20°C and avoid freeze-thaw cycles. |

### TARGET INFORMATION

|                           |   |
|---------------------------|---|
| <b>Gene ID</b>            | <a href="#">19766</a>   |
| <b>Gene Symbol</b>        | <a href="#">Ripk1</a>   |
| <b>Uniprot ID</b>         | <a href="#">RIPK1_MOUSE</a>   |
| <b>Immunogen</b>          | A phospho specific peptide corresponding to residues surrounding S166 of Mouse RIPK1. |
| <b>Immunogen Region</b>   |   |
| <b>Specificity</b>        |   |
| <b>Immunogen Sequence</b> |   |



Western blot analysis of extracts of NIH/3T3 cells, using Phospho-RIPK1-S166 antibody (STJ11101149) at 1:1000 dilution. NIH/3T3 cells were treated by TNF-Alpha (20 ng/mL) at 37 °C for 30 minutes. Secondary antibody: HRP Goat Anti-rabbit IgG (H+L) at 1:10000 dilution. Lysates/proteins: 25ug per lane. Blocking buffer: 3% BSA. Detection: ECL Basic Kit. Exposure time: 60s.

This product is suitable for in-vitro studies under the RESEARCH USE ONLY [RUO] licence. This product must not be used as for diagnostic or other medical purposes.  
 St John's Laboratory Ltd, Knowledge Dock Business Centre, University Way, London, E16 2RD | Tel: 0208 223 3081