

## Anti-Phospho-MAP2K3/MAP2K6-S189/S207 antibody (STJ11101146)

STJ11101146

### GENERAL INFORMATION

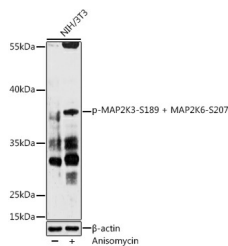
<b>Product Type</b>	Primary antibodies
<b>Short Description</b>	Rabbit polyclonal antibody anti-Phospho-MAP2K3/MAP2K6-S189/S207 is suitable for use in Western Blot.
<b>Applications</b>	WB
<b>Host/Source</b>	Rabbit
<b>Reactivity</b>	Human, Mouse

### PRODUCT PROPERTIES

<b>Clonality</b>	Polyclonal
<b>Clone ID</b>	
<b>Concentration</b>	
<b>Conjugation</b>	Unconjugated
<b>Purification</b>	Affinity purification
<b>Dilution Range</b>	WB 1:500-1:2000
<b>Formulation</b>	PBS containing 0.02% Sodium Azide, 50% Glycerol, pH7.3.
<b>Isotype</b>	IgG
<b>Storage Instruction</b>	Store in a freezer at -20°C and avoid freeze-thaw cycles.

### TARGET INFORMATION

<b>Gene ID</b>	<a href="#">5606</a> <a href="#">5608</a>
<b>Gene Symbol</b>	<a href="#">MAP2K3</a> <a href="#">MAP2K6</a>
<b>Uniprot ID</b>	<a href="#">MP2K3_HUMAN</a> <a href="#">MP2K6_HUMAN</a>
<b>Immunogen</b>	A phospho specific peptide corresponding to residues surrounding S189/S207 of human MAP2K3/MAP2K6.
<b>Immunogen Region</b>	
<b>Specificity</b>	
<b>Immunogen Sequence</b>	



Western blot analysis of extracts of NIH/3T3 cells, using Phospho-MAP2K3-S189 + MAP2K6-S207 antibody (STJ11101146) at 1:1000 dilution. NIH/3T3 cells were treated by Anisomycin (25 ug/ml) at 37 °C for 30 minutes after serum-starvation overnight. Secondary antibody: HRP Goat Anti-rabbit IgG (H+L) at 1:10000 dilution. Lysates/proteins: 25ug per lane. Blocking buffer: 3% nonfat dry milk in TBST. Detection: ECL Basic Kit. Exposure time: 180s.

This product is suitable for in-vitro studies under the RESEARCH USE ONLY [RUO] licence. This product must not be used as for diagnostic or other medical purposes.  
St John's Laboratory Ltd, Knowledge Dock Business Centre, University Way, London, E16 2RD | Tel: 0208 223 3081