

Anti-Phospho-TH-S40 antibody (STJ11101143)

STJ11101143

GENERAL INFORMATION

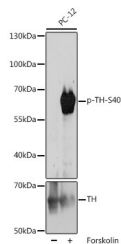
Product Type	Primary antibodies
Short Description	Rabbit polyclonal antibody anti-Phospho-TH-S40 is suitable for use in Western Blot.
Applications	WB
Host/Source	Rabbit
Reactivity	Rat

PRODUCT PROPERTIES

Clonality	Polyclonal
Clone ID	
Concentration	
Conjugation	Unconjugated
Purification	Affinity purification
Dilution Range	WB 1:500-1:2000
Formulation	PBS containing 0.02% Sodium Azide, 50% Glycerol, pH7.3.
Isotype	IgG
Storage Instruction	Store in a freezer at -20°C and avoid freeze-thaw cycles.

TARGET INFORMATION

Gene ID	7054
Gene Symbol	TH
Uniprot ID	TY3H_HUMAN
Immunogen	A phospho specific peptide corresponding to residues surrounding S40 of human TH.
Immunogen Region	
Specificity	
Immunogen Sequence	



Western blot analysis of extracts of PC-12 cells, using Phospho-TH-S40 polyclonal antibody (STJ11101143) at 1:1000 dilution or TH antibody (STJ29777). PC-12 cells were treated by Forskolin (30 uM) at 37 °C for 30 minutes. Secondary antibody: HRP Goat Anti-rabbit IgG (H+L) at 1:10000 dilution. Lysates/proteins: 25ug per lane. Blocking buffer: 3% BSA. Detection: ECL Basic Kit. Exposure time: 3s.

This product is suitable for in-vitro studies under the RESEARCH USE ONLY [RUO] licence. This product must not be used as for diagnostic or other medical purposes.
 St John's Laboratory Ltd, Knowledge Dock Business Centre, University Way, London, E16 2RD | Tel: 0208 223 3081