

Anti-Phospho-DLG2-Y340 antibody (STJ11101118)

STJ11101118

GENERAL INFORMATION

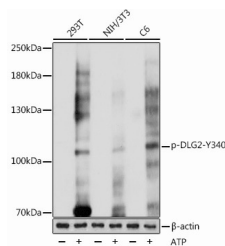
Product Type	Primary antibodies
Short Description	Rabbit polyclonal antibody anti-Phospho-DLG2-Y340 is suitable for use in Western Blot.
Applications	WB
Host/Source	Rabbit
Reactivity	Human, Mouse, Rat

PRODUCT PROPERTIES

Clonality	Polyclonal
Clone ID	
Concentration	
Conjugation	Unconjugated
Purification	Affinity purification
Dilution Range	WB 1:500-1:2000
Formulation	PBS containing 0.02% Sodium Azide, 50% Glycerol, pH7.3.
Isotype	IgG
Storage Instruction	Store in a freezer at -20°C and avoid freeze-thaw cycles.

TARGET INFORMATION

Gene ID	1740
Gene Symbol	DLG2
Uniprot ID	DLG2_HUMAN
Immunogen	A phospho synthetic peptide corresponding to residues surrounding Y340 of human DLG2.
Immunogen Region	
Specificity	
Immunogen Sequence	



Western blot analysis of extracts of various cell lines, using Phospho-DLG2-Y340 antibody (STJ11101118) at 1:1000 dilution. 293T cells were treated by ATP (5 mM) at 30 °C for 1 hour. NIH/3T3 cells were treated by ATP (5 mM) at 30 °C for 1 hour. C6 cells were treated by ATP (5 mM) at 30 °C for 1 hour. Secondary antibody: HRP Goat Anti-rabbit IgG (H+L) at 1:10000 dilution. Lysates/proteins: 25ug per lane. Blocking buffer: 3% BSA. Detection: ECL Basic Kit. Exposure time: 1s.