

## Anti-Phospho-AKT1/AKT2/AKT3-S473/S474/S472 antibody (STJ11101106)

STJ11101106

### GENERAL INFORMATION

<b>Product Type</b>	Primary antibodies
<b>Short Description</b>	Rabbit polyclonal antibody anti-Phospho-AKT1/AKT2/AKT3-S473/S474/S472 is suitable for use in Western Blot and Immunohistochemistry.
<b>Applications</b>	WB, IHC
<b>Host/Source</b>	Rabbit
<b>Reactivity</b>	Human, Mouse, Rat

### PRODUCT PROPERTIES

<b>Clonality</b>	Polyclonal
<b>Clone ID</b>	
<b>Concentration</b>	
<b>Conjugation</b>	Unconjugated
<b>Purification</b>	Affinity purification
<b>Dilution Range</b>	WB 1:500-1:2000 IHC 1:50-1:200
<b>Formulation</b>	PBS containing 0.02% Sodium Azide, 50% Glycerol, pH7.3.
<b>Isotype</b>	IgG
<b>Storage Instruction</b>	Store in a freezer at -20°C and avoid freeze-thaw cycles.

### TARGET INFORMATION

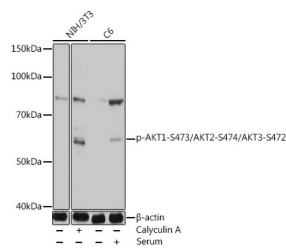
<b>Gene ID</b>	208 10000 207 AKT2 AKT3 AKT2_HUMAN AKT3_HUMAN AKT1_HUMAN <
----------------	--

**Immunogen** A phospho synthetic peptide corresponding to residues surrounding S473/S474/S472 of human AKT1/AKT2/AKT3.

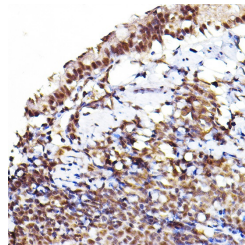
**Immunogen Region**

**Specificity**

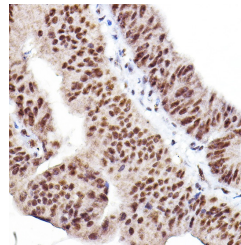
**Immunogen Sequence**



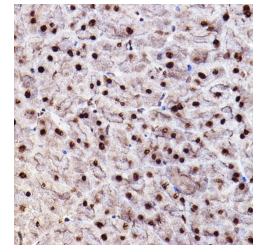
Western blot analysis of extracts of various cell lines, using Phospho-AKT1-S473+AKT2-S474+AKT3-S472 antibody (STJ11101106) at 1:1000 dilution. NIH9373 cells were treated by Calyculin A (100 nM) at 37 °C for 30 minutes after serum-starvation overnight. C6 cells were treated by 10% FBS at 37 °C for 30 minutes after serum-starvation overnight. Secondary antibody: HRP Goat Anti-rabbit IgG (H+L) at 1:10000 dilution. Lysates/proteins: 25µg per lane. Blocking buffer: 3% nonfat dry milk in TBST. Detection: ECL Basic Kit. Exposure time: 10s.



Immunohistochemistry of paraffin-embedded rat lung using Phospho-AKT1-S473+AKT2-S474+AKT3-S472 rabbit polyclonal antibody (STJ11101106) at dilution of 1:100 (40x lens).



Immunohistochemistry of paraffin-embedded human colon carcinoma using Phospho-AKT1-S473+AKT2-S474+AKT3-S472 rabbit polyclonal antibody (STJ11101106) at dilution of 1:100 (40x lens).



Immunohistochemistry of paraffin-embedded mouse pancreas using Phospho-AKT1-S473+AKT2-S474+AKT3-S472 rabbit polyclonal antibody (STJ11101106) at dilution of 1:100 (40x lens).

This product is suitable for in-vitro studies under the RESEARCH USE ONLY [RUO] licence. This product must not be used as for diagnostic or other medical purposes.

St John's Laboratory Ltd, Knowledge Dock Business Centre, University Way, London, E16 2RD | Tel: 0208 223 3081