

Anti-Phospho-IRS1-S323 antibody (STJ11101089)

STJ11101089

GENERAL INFORMATION

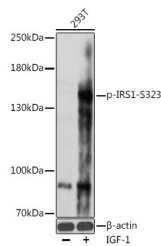
Product Type	Primary antibodies
Short Description	Rabbit polyclonal antibody anti-Phospho-IRS1-S323 is suitable for use in Western Blot.
Applications	WB
Host/Source	Rabbit
Reactivity	Human, Mouse, Rat

PRODUCT PROPERTIES

Clonality	Polyclonal
Clone ID	
Concentration	
Conjugation	Unconjugated
Purification	Affinity purification
Dilution Range	WB 1:500-1:2000
Formulation	PBS containing 0.02% Sodium Azide, 50% Glycerol, pH7.3.
Isotype	IgG
Storage Instruction	Store in a freezer at -20°C and avoid freeze-thaw cycles.

TARGET INFORMATION

Gene ID	3667
Gene Symbol	IRS1
Uniprot ID	IRS1_HUMAN
Immunogen	A phospho synthetic peptide corresponding to residues surrounding S323 of human IRS1.
Immunogen Region	
Specificity	
Immunogen Sequence	



Western blot analysis of extracts of 293T cells, using Phospho-IRS1-S323 antibody (STJ11101089) at 1:1000 dilution. 293T cells were treated by IGF-1 (50 ng/mL) at 37 °C for 5 minutes after serum-starvation overnight. Secondary antibody: HRP-Coat Anti-rabbit IgG (H+L) at 1:10000 dilution. Lysates/proteins: 25ug per lane. Blocking buffer: 3% nonfat dry milk in TBST. Detection: ECL Basic Kit. Exposure time: 10s.

This product is suitable for in-vitro studies under the RESEARCH USE ONLY [RUO] licence. This product must not be used as for diagnostic or other medical purposes.
 St John's Laboratory Ltd, Knowledge Dock Business Centre, University Way, London, E16 2RD | Tel: 0208 223 3081