

Anti-Phospho-MYL9-T18/S19 antibody (STJ11101086)

STJ11101086

GENERAL INFORMATION

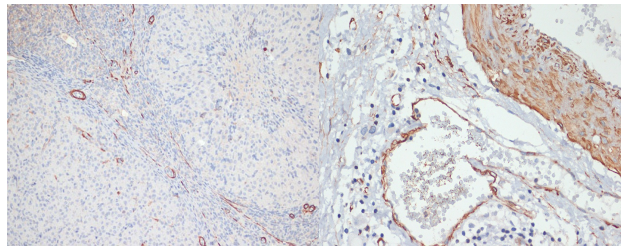
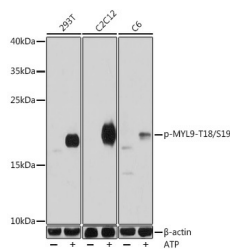
Product Type	Primary antibodies
Short Description	Rabbit polyclonal antibody anti-Phospho-MYL9-T18/S19 is suitable for use in Western Blot and Immunohistochemistry.
Applications	WB, IHC
Host/Source	Rabbit
Reactivity	Human, Mouse, Rat

PRODUCT PROPERTIES

Clonality	Polyclonal
Clone ID	
Concentration	
Conjugation	Unconjugated
Purification	Affinity purification
Dilution Range	WB 1:500-1:2000 IHC 1:50-1:200
Formulation	PBS containing 0.02% Sodium Azide, 50% Glycerol, pH7.3.
Isotype	IgG
Storage Instruction	Store in a freezer at -20°C and avoid freeze-thaw cycles.

TARGET INFORMATION

Gene ID	10398
Gene Symbol	MYL9
Uniprot ID	MYL9_HUMAN
Immunogen	A synthetic phosphorylated peptide around of human Phospho-MYL9-T18/S19.
Immunogen Region	
Specificity	
Immunogen Sequence	



Immunohistochemistry of paraffin-embedded Rat ovary using Phospho-MYL9-T18/S19 antibody (STJ11101086) at dilution of 1:100 (20x lens).

Immunohistochemistry of paraffin-embedded Human gastric cancer using Phospho-MYL9-T18/S19 antibody (STJ11101086) at dilution of 1:100 (40x lens).

This product is suitable for in-vitro studies under the RESEARCH USE ONLY [RUO] licence. This product must not be used as for diagnostic or other medical purposes.
St John's Laboratory Ltd, Knowledge Dock Business Centre, University Way, London, E16 2RD | Tel: 0208 223 3081