

Anti-Phospho-IGF1R/INSR-Y1165/116 & Y1189/1190 antibody (STJ11101037)

STJ11101037

GENERAL INFORMATION

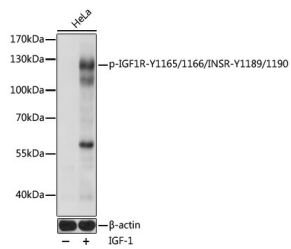
Product Type	Primary antibodies
Short Description	Rabbit polyclonal antibody anti-Phospho-IGF1R/INSR-Y1165/116 & Y1189/1190 is suitable for use in Western Blot.
Applications	WB
Host/Source	Rabbit
Reactivity	Human, Mouse, Rat

PRODUCT PROPERTIES

Clonality	Polyclonal
Clone ID	3643
Concentration	
Conjugation	Unconjugated
Purification	Affinity purification
Dilution Range	WB 1:500-1:2000
Formulation	PBS containing 0.02% Sodium Azide, 50% Glycerol, pH7.3.
Isotype	IgG
Storage Instruction	Store in a freezer at -20°C and avoid freeze-thaw cycles.

TARGET INFORMATION

Gene ID	3480 3643
Gene Symbol	IGF1R INSR
Uniprot ID	IGF1R_HUMAN INSR_HUMAN
Immunogen	A phospho specific peptide corresponding to residues surrounding Y1165/1166 of human INSR and Y1131 of human IGF1R
Immunogen Region	
Specificity	
Immunogen Sequence	



Western blot analysis of extracts of HeLa cells, using Phospho-IGF1R-Y1165/1166/INSR-Y1189/1190 polyclonal antibody (STJ11101037) at 1:1000 dilution. HeLa cells were treated by IGF-1 (50 ng/mL) at 37 °C for 30 minutes after serum-starvation overnight. Secondary antibody: HRP Goat Anti-rabbit IgG (H+L) at 1:10000 dilution. Lysates/proteins: 25µg per lane. Blocking buffer: 3% BSA. Detection: ECL Basic Kit. Exposure time: 1s.

This product is suitable for in-vitro studies under the RESEARCH USE ONLY [RUO] licence. This product must not be used as for diagnostic or other medical purposes.
St John's Laboratory Ltd, Knowledge Dock Business Centre, University Way, London, E16 2RD | Tel: 0208 223 3081