

## Anti-Phospho-CHUK/IKBKB-S176/180 antibody (STJ11101028)

STJ11101028

### GENERAL INFORMATION

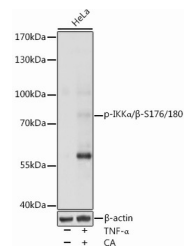
<b>Product Type</b>	Primary antibodies
<b>Short Description</b>	Rabbit polyclonal antibody anti-Phospho-IKK Alpha/Beta-S176/180 is suitable for use in Western Blot.
<b>Applications</b>	WB
<b>Host/Source</b>	Rabbit
<b>Reactivity</b>	Human

### PRODUCT PROPERTIES

<b>Clonality</b>	Polyclonal
<b>Clone ID</b>	
<b>Concentration</b>	
<b>Conjugation</b>	Unconjugated
<b>Purification</b>	Affinity purification
<b>Dilution Range</b>	WB 1:500-1:2000
<b>Formulation</b>	PBS containing 0.02% Sodium Azide, 50% Glycerol, pH7.3.
<b>Isotype</b>	IgG
<b>Storage Instruction</b>	Store in a freezer at -20°C and avoid freeze-thaw cycles.

### TARGET INFORMATION

<b>Gene ID</b>	<a href="#">3551</a> <a href="#">1147</a>
<b>Gene Symbol</b>	<a href="#">IKBKB</a> <a href="#">CHUK</a>
<b>Uniprot ID</b>	<a href="#">IKKB_HUMAN</a> <a href="#">IKKA_HUMAN</a>
<b>Immunogen</b>	A phospho specific peptide corresponding to residues surrounding S176/180 of human IKK Alpha/Beta.
<b>Immunogen Region</b>	
<b>Specificity</b>	
<b>Immunogen Sequence</b>	



Western blot analysis of extracts of HeLa cells, using Phospho-IKK Alpha/ Beta-S176/180 antibody (STJ11101028) at 1:1000 dilution. HeLa cells were treated by TNF-Alpha (20 ng/mL) and Calyculin A (100 nM) at 37 °C for 10 minutes. Secondary antibody: HRP Goat Anti-rabbit IgG (H+L) at 1:10000 dilution. Lysates/proteins: 25ug per lane. Blocking buffer: 3% BSA. Detection: ECL Basic Kit. Exposure time: 1s.

This product is suitable for in-vitro studies under the RESEARCH USE ONLY [RUO] licence. This product must not be used as for diagnostic or other medical purposes.  
St John's Laboratory Ltd, Knowledge Dock Business Centre, University Way, London, E16 2RD | Tel: 0208 223 3081