

## Anti-Phospho-TP53-S392 antibody (STJ11101001)

STJ11101001

### GENERAL INFORMATION

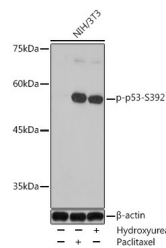
<b>Product Type</b>	Primary antibodies
<b>Short Description</b>	Rabbit polyclonal antibody anti-Phospho-p53-S392 is suitable for use in Western Blot.
<b>Applications</b>	WB
<b>Host/Source</b>	Rabbit
<b>Reactivity</b>	Human, Mouse, Rat

### PRODUCT PROPERTIES

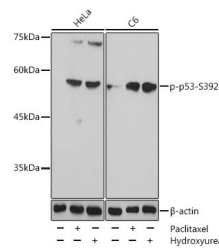
<b>Clonality</b>	Polyclonal
<b>Clone ID</b>	
<b>Concentration</b>	
<b>Conjugation</b>	Unconjugated
<b>Purification</b>	Affinity purification
<b>Dilution Range</b>	WB 1:500-1:2000
<b>Formulation</b>	PBS containing 0.02% Sodium Azide, 50% Glycerol, pH7.3.
<b>Isotype</b>	IgG
<b>Storage Instruction</b>	Store in a freezer at -20°C and avoid freeze-thaw cycles.

### TARGET INFORMATION

<b>Gene ID</b>	7157
<b>Gene Symbol</b>	TP53
<b>Uniprot ID</b>	P53_HUMAN
<b>Immunogen</b>	A synthetic phosphorylated peptide around S392 of human p53 (NP_000537.3).
<b>Immunogen Region</b>	
<b>Specificity</b>	
<b>Immunogen Sequence</b>	



Western blot analysis of extracts of NIH/3T3 cells, using Phospho-p53-S392 antibody (STJ11101001) at 1:1000 dilution. NIH/3T3 cells were treated by Paclitaxel (100 nM/ml) at 37 °C for 20 hours. NIH/3T3 cells were treated by Hydroxyurea (4 mM) at 37 °C for 20 hours. Secondary antibody: HRP Goat Anti-rabbit IgG (H+L) at 1:10000 dilution. Lysates/proteins: 25ug per lane. Blocking buffer: 3% BSA. Detection: ECL Enhanced Kit. Exposure time: 1s.



Western blot analysis of extracts of various cell lines, using Phospho-p53-S392 antibody (STJ11101001) at 1:1000 dilution. HeLa cells were treated by Paclitaxel (100 nM/ml) at 37 °C for 20 hours. HeLa cells were treated by Hydroxyurea (4 mM) at 37 °C for 20 hours. C6 cells were treated by Paclitaxel (100 nM) at 37 °C for 20 hours. C6 cells were treated by Hydroxyurea (4 mM) at 37 °C for 20 hours. Secondary antibody: HRP Goat Anti-rabbit IgG (H+L) at 1:10000 dilution. Lysates/proteins: 25ug per lane. Blocking buffer: 3% BSA. Detection: ECL Enhanced Kit. Exposure time: 20s.

This product is suitable for in-vitro studies under the RESEARCH USE ONLY [RUO] licence. This product must not be used as for diagnostic or other medical purposes.  
 St John's Laboratory Ltd, Knowledge Dock Business Centre, University Way, London, E16 2RD | Tel: 0208 223 3081