

Anti-Phospho-LIPE-S563 antibody (STJ11100992)

STJ11100992

GENERAL INFORMATION

Product Type	Primary antibodies
Short Description	Rabbit polyclonal antibody anti-Phospho-LIPE-S563 is suitable for use in Western Blot.
Applications	WB
Host/Source	Rabbit
Reactivity	Human, Mouse, Rat

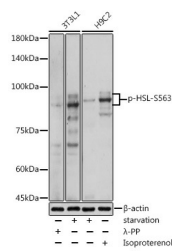
PRODUCT PROPERTIES

Clonality	Polyclonal
Clone ID	
Concentration	
Conjugation	Unconjugated
Purification	Affinity purification
Dilution Range	WB 1:500-1:2000
Formulation	PBS containing 0.02% Sodium Azide, 50% Glycerol, pH7.3.
Isotype	IgG
Storage Instruction	Store in a freezer at -20°C and avoid freeze-thaw cycles.

TARGET INFORMATION

Gene ID	3991
Gene Symbol	LIPE
Uniprot ID	LIPS_HUMAN
Immunogen	A phospho specific peptide corresponding to residues surrounding S853 of human HSL (NP_005348.2, equivalent to S563 of rat HSL)

Immunogen Region Specificity Immunogen Sequence



Western blot analysis of extracts of various cell lines, using Phospho-HSL-S563 antibody (STJ11100992) at 1:1000 dilution. 3T3L1 cells were treated by Lambda-PP mixed solution (1uM) at 30 °C for 30 minutes. H9C2 cells were treated with Isoproterenol (10 Mu M for 20 min) at 37 °C. Secondary antibody: HRP Goat Anti-rabbit IgG (H+L) at 1:10000 dilution. Lysates/proteins: 25ug per lane. Blocking buffer: 3% nonfat dry milk in TBST. Detection: ECL Basic Kit. Exposure time: 180s.

This product is suitable for in-vitro studies under the RESEARCH USE ONLY [RUO] licence. This product must not be used as for diagnostic or other medical purposes.
St John's Laboratory Ltd, Knowledge Dock Business Centre, University Way, London, E16 2RD | Tel: 0208 223 3081