

Anti-Phospho-Smad1/Smad5/Smad9-S463/465 & S463/465 & S465/467 antibody (STJ11100991)

STJ11100991

GENERAL INFORMATION

Product Type	Primary antibodies
Short Description	Rabbit polyclonal antibody anti-Phospho-Smad1/Smad5/Smad9-S463/465 & S463/465 & S465/467 is suitable for use in Western Blot.
Applications	WB
Host/Source	Rabbit
Reactivity	Human, Mouse

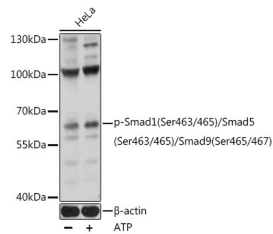
PRODUCT PROPERTIES

Clonality	Polyclonal
Clone ID	
Concentration	
Conjugation	Unconjugated
Purification	Affinity purification
Dilution Range	WB 1:500-1:2000
Formulation	PBS containing 0.02% Sodium Azide, 50% Glycerol, pH7.3.
Isotype	IgG
Storage Instruction	Store in a freezer at -20°C and avoid freeze-thaw cycles.

TARGET INFORMATION

Gene ID [4090](#)
[4086](#)
[4093](#)
[SMAD5](#)
[SMAD1](#)
[SMAD5_HUMAN](#)
[SMAD1_HUMAN](#)
[SMAD9_HUMAN](#)

Immunogen A phospho specific peptide corresponding to residues surrounding S463 of human Smad1
Immunogen Region
Specificity
Immunogen Sequence



Western blot analysis of extracts of HeLa cells, using Phospho-Smad1 (Ser463/465) /Smad5 (Ser463/465) /Smad9 (Ser465/467) polyclonal antibody (STJ11100991) at 1:1000 dilution. HeLa cells were treated by ATP (5 mM) at 30 °C for 1 hour. Secondary antibody: HRP Coat Anti-rabbit IgG (H+L) at 1:10000 dilution. Lysates/proteins: 25ug per lane. Blocking buffer: 3% BSA. Detection: ECL Basic Kit. Exposure time: 60s.

This product is suitable for in-vitro studies under the RESEARCH USE ONLY [RUO] licence. This product must not be used as for diagnostic or other medical purposes.
 St John's Laboratory Ltd, Knowledge Dock Business Centre, University Way, London, E16 2RD | Tel: 0208 223 3081