

Anti-Phospho-NEDD4L-S448 antibody (STJ11100984)

STJ11100984

GENERAL INFORMATION

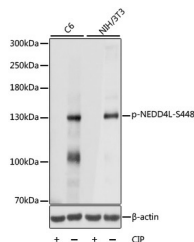
Product Type	Primary antibodies
Short Description	Rabbit polyclonal antibody anti-Phospho-NEDD4L-S448 is suitable for use in Western Blot.
Applications	WB
Host/Source	Rabbit
Reactivity	Human, Mouse, Rat

PRODUCT PROPERTIES

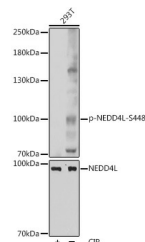
Clonality	Polyclonal
Clone ID	
Concentration	
Conjugation	Unconjugated
Purification	Affinity purification
Dilution Range	WB 1:500-1:2000
Formulation	PBS containing 0.02% Sodium Azide, 50% Glycerol, pH7.3.
Isotype	IgG
Storage Instruction	Store in a freezer at -20°C and avoid freeze-thaw cycles.

TARGET INFORMATION

Gene ID	23327
Gene Symbol	NEDD4L
Uniprot ID	NED4L_HUMAN
Immunogen	A synthetic phosphorylated peptide around S448 of human NEDD4L (NP_001138439.1).
Immunogen Region	
Specificity	
Immunogen Sequence	



Western blot analysis of extracts of various cell lines, using Phospho-NEDD4L-S448 antibody (STJ11100984) at 1:1000 dilution. NIH 3T3 cell lysate were treated by CIP (20ul CIP for each 400ul cell lysate) at 37 °C for 1 hour. C6 cell lysate were treated by CIP (20ul CIP for each 400ul cell lysate) at 37 °C for 1 hour. Secondary antibody: HRP Goat Anti-rabbit IgG (H+L) at 1:10000 dilution. Lysates/proteins: 25ug per lane. Blocking buffer: 3% BSA. Detection: ECL Basic Kit. Exposure time: 5s.



Western blot analysis of extracts of 293T cells, using Phospho-NEDD4L-S448 polyclonal antibody (STJ11100984) at 1:1000 dilution or NEDD4L antibody (STJ110385). 293T cells were treated by CIP (20ul/400ul) at 37 °C for 1 hour. Secondary antibody: HRP Goat Anti-rabbit IgG (H+L) at 1:10000 dilution. Lysates/proteins: 25ug per lane. Blocking buffer: 3% BSA. Detection: ECL Basic Kit. Exposure time: 5s.

This product is suitable for in-vitro studies under the RESEARCH USE ONLY [RUO] licence. This product must not be used as for diagnostic or other medical purposes.
 St John's Laboratory Ltd, Knowledge Dock Business Centre, University Way, London, E16 2RD | Tel: 0208 223 3081