

Anti-Phospho-CTNNB1-S33/S37/T41 antibody (STJ11100967)

STJ11100967

GENERAL INFORMATION

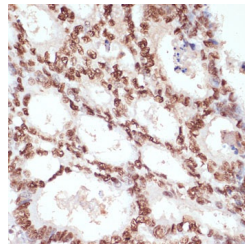
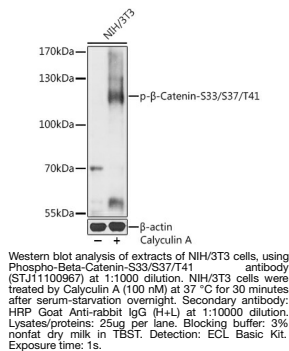
Product Type	Primary antibodies
Short Description	Rabbit polyclonal antibody anti-Phospho-Beta-Catenin-S33/S37/T41 is suitable for use in Western Blot and Immunohistochemistry.
Applications	WB, IHC
Host/Source	Rabbit
Reactivity	Human, Mouse, Rat

PRODUCT PROPERTIES

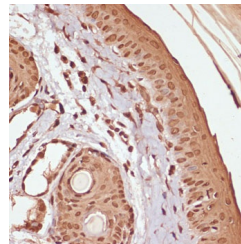
Clonality	Polyclonal
Clone ID	
Concentration	
Conjugation	Unconjugated
Purification	Affinity purification
Dilution Range	WB 1:500-1:2000 IHC 1:50-1:200
Formulation	PBS containing 0.02% Sodium Azide, 50% Glycerol, pH7.3.
Isotype	IgG
Storage Instruction	Store in a freezer at -20°C and avoid freeze-thaw cycles.

TARGET INFORMATION

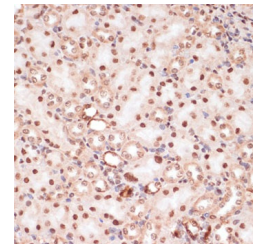
Gene ID	1499
Gene Symbol	CTNNB1
Uniprot ID	CTNB1_HUMAN
Immunogen	A synthetic phosphorylated peptide around S33 & T41 of human beta Catenin (NP_001091679).
Immunogen Region	
Specificity	
Immunogen Sequence	



Immunohistochemistry of paraffin-embedded human colon carcinoma using Phospho-Beta-Catenin-S33/S37/T41 antibody (STJ11100967) at dilution of 1:100 (40x lens).



Immunohistochemistry of paraffin-embedded rat skin using Phospho-Beta-Catenin-S33/S37/T41 antibody (STJ11100967) at dilution of 1:100 (40x lens).



Immunohistochemistry of paraffin-embedded mouse kidney using Phospho-Beta-Catenin-S33/S37/T41 antibody (STJ11100967) at dilution of 1:100 (40x lens).

This product is suitable for in-vitro studies under the RESEARCH USE ONLY [RUO] licence. This product must not be used as for diagnostic or other medical purposes.
St John's Laboratory Ltd, Knowledge Dock Business Centre, University Way, London, E16 2RD | Tel: 0208 223 3081