

Anti-SPHK2 antibody (1-165) (STJ11100900)

STJ11100900

GENERAL INFORMATION

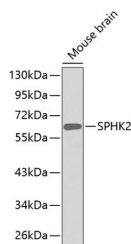
Product Type	Primary antibodies
Short Description	Rabbit polyclonal antibody anti-SPHK2 (1-165) is suitable for use in Western Blot.
Applications	WB
Host/Source	Rabbit
Reactivity	Human, Mouse

PRODUCT PROPERTIES

Clonality	Polyclonal
Clone ID	
Concentration	
Conjugation	Unconjugated
Purification	Affinity purification
Dilution Range	WB 1:500-1:1000
Formulation	PBS containing 0.02% Sodium Azide, 50% Glycerol, pH7.3.
Isotype	IgG
Storage Instruction	Store in a freezer at -20°C and avoid freeze-thaw cycles.

TARGET INFORMATION

Gene ID	56848
Gene Symbol	SPHK2
Uniprot ID	SPHK2_HUMAN
Immunogen	Recombinant fusion protein containing a sequence corresponding to amino acids 1-165 of human SPHK2 (NP_001191088.1).
Immunogen Region	1-165
Specificity	
Immunogen Sequence	



Western blot analysis of extracts of mouse brain, using SPHK2 antibody (STJ11100900). Secondary antibody: HRP-Goat Anti-rabbit IgG (H+L) at 1:10000 dilution. Lysates/proteins: 25µg per lane. Blocking buffer: 3% nonfat dry milk in TBST.