

Anti-Mono-Methyl-Histone H4-R3 antibody (STJ11100898)

STJ11100898

GENERAL INFORMATION

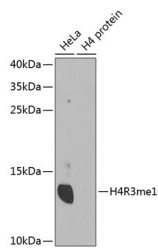
Product Type	Primary antibodies
Short Description	Rabbit polyclonal antibody anti-Mono-Methyl-Histone H4-R3 is suitable for use in Western Blot, Immunohistochemistry, Immunofluorescence and Immunoprecipitation.
Applications	WB, IHC, IF, IP
Host/Source	Rabbit
Reactivity	Human, Mouse, Rat

PRODUCT PROPERTIES

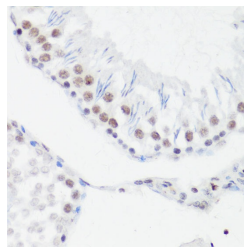
Clonality	Polyclonal
Clone ID	
Concentration	
Conjugation	Unconjugated
Purification	Affinity purification
Dilution Range	WB 1:500-1:2000 IHC 1:50-1:200 IF 1:50-1:200 IP 1:50-1:200
Formulation	PBS containing 0.02% Sodium Azide, 50% Glycerol, pH7.3.
Isotype	IgG
Storage Instruction	Store in a freezer at -20°C and avoid freeze-thaw cycles.

TARGET INFORMATION

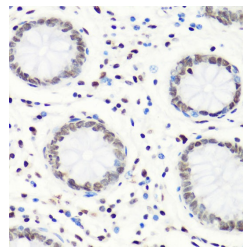
Gene ID	121504/554313/8294/8359/8360/8361/8362/8363/8364/8365/8366/8367/8368/8370
Gene Symbol	H4C1.H4C2.H4C3.H4C4.H4C5.H4C6.H4C8.H4C9.H4C11.H4C12.H4C13.H4C14.H4C15.H4-16
Uniprot ID	H4_HUMAN
Immunogen	A synthetic peptide of human MonoMethyl-Histone H4-R3
Immunogen Region	
Specificity	
Immunogen Sequence	



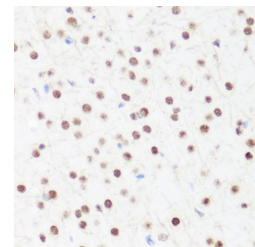
Western blot analysis of extracts of various cell lines, using MonoMethyl-Histone H4-R3 antibody (STJ11100898). Secondary antibody: HRP Goat Anti-rabbit IgG (H+L) at 1:10000 dilution. Lysates/proteins: 25µg per lane. Blocking buffer: 3% nonfat dry milk in TBST.



Immunohistochemistry of paraffin-embedded rat testis using MonoMethyl-Histone H4-R3 antibody (STJ11100898) at dilution of 1:100 (40x lens).



Immunohistochemistry of paraffin-embedded human colon using MonoMethyl-Histone H4-R3 antibody (STJ11100898) at dilution of 1:100 (40x lens).



Immunohistochemistry of paraffin-embedded mouse brain using MonoMethyl-Histone H4-R3 antibody (STJ11100898) at dilution of 1:100 (40x lens).

This product is suitable for in-vitro studies under the RESEARCH USE ONLY [RUO] licence. This product must not be used as for diagnostic or other medical purposes.
St John's Laboratory Ltd, Knowledge Dock Business Centre, University Way, London, E16 2RD | Tel: 0208 223 3081