

## Anti-ADH1A/ADH1B/ADH1C antibody (C-Term) (STJ11100528)

STJ11100528

### GENERAL INFORMATION

<b>Product Type</b>	Primary antibodies
<b>Short Description</b>	Rabbit polyclonal antibody anti-ADH1A/ADH1B/ADH1C (C-Term) is suitable for use in Western Blot and Immunofluorescence.
<b>Applications</b>	WB, IF
<b>Host/Source</b>	Rabbit
<b>Reactivity</b>	Human, Mouse, Rat

### PRODUCT PROPERTIES

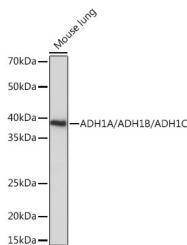
<b>Clonality</b>	Polyclonal
<b>Clone ID</b>	
<b>Concentration</b>	
<b>Conjugation</b>	Unconjugated
<b>Purification</b>	Affinity purification
<b>Dilution Range</b>	WB 1:500-1:2000 IF 1:50-1:200
<b>Formulation</b>	PBS containing 0.02% Sodium Azide, 50% Glycerol, pH7.3.
<b>Isotype</b>	IgG
<b>Storage Instruction</b>	Store in a freezer at -20°C and avoid freeze-thaw cycles.

### TARGET INFORMATION

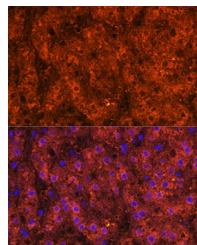
**Gene ID**  
[125](#)  
[126](#)  
[124](#)  
[ADH1B](#)  
[ADH1C](#)  
[ADH1B\\_HUMAN](#)  
[ADH1G\\_HUMAN](#)  
[ADH1A\\_HUMAN](#)

**Immunogen** A synthetic peptide corresponding to a sequence within amino acids 280 to the C-terminus of human ADH1A/ADH1B/ADH1C (NP\_000659.2).

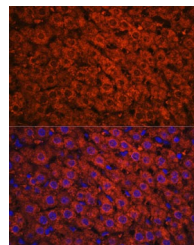
**Immunogen Region** C-Term  
**Specificity**  
**Immunogen Sequence**



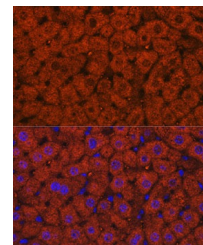
Western blot analysis of extracts of mouse lung, using ADH1A/ADH1B/ADH1C rabbit polyclonal antibody (STJ11100528) at 1:1000 dilution. Secondary antibody: HRP Goat Anti-rabbit IgG (H+L) at 1:10000 dilution. Lysates/proteins: 25ug per lane. Blocking buffer: 3% nonfat dry milk in TBST. Detection: ECL Basic Kit. Exposure time: 10s.



Immunofluorescence analysis of Human liver using ADH1A/ADH1B/ADH1C rabbit polyclonal antibody (STJ11100528) at dilution of 1:100. Blue: DAPI for nuclear staining.



Immunofluorescence analysis of Rat liver using ADH1A/ADH1B/ADH1C rabbit polyclonal antibody (STJ11100528) at dilution of 1:100. Blue: DAPI for nuclear staining.



Immunofluorescence analysis of mouse liver using ADH1A/ADH1B/ADH1C rabbit polyclonal antibody (STJ11100528) at dilution of 1:100. Blue: DAPI for nuclear staining.

This product is suitable for in-vitro studies under the RESEARCH USE ONLY [RUO] licence. This product must not be used as for diagnostic or other medical purposes.

St John's Laboratory Ltd, Knowledge Dock Business Centre, University Way, London, E16 2RD | Tel: 0208 223 3081