

## Anti-ZNF645 antibody (STJ11100504)

STJ11100504

### GENERAL INFORMATION

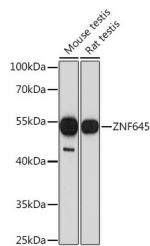
|                          |   |
|--------------------------|---|
| <b>Product Type</b>      | Primary antibodies  |
| <b>Short Description</b> | Rabbit polyclonal antibody anti-ZNF645 is suitable for use in Western Blot. |
| <b>Applications</b>      | WB  |
| <b>Host/Source</b>       | Rabbit  |
| <b>Reactivity</b>        | Mouse, Rat  |

### PRODUCT PROPERTIES

|                            |   |
|----------------------------|---|
| <b>Clonality</b>           | Polyclonal  |
| <b>Clone ID</b>            |   |
| <b>Concentration</b>       |   |
| <b>Conjugation</b>         | Unconjugated  |
| <b>Purification</b>        | Affinity purification                                     |
| <b>Dilution Range</b>      | WB 1:500-1:2000   |
| <b>Formulation</b>         | PBS containing 0.02% Sodium Azide, 50% Glycerol, pH7.3.   |
| <b>Isotype</b>             | IgG   |
| <b>Storage Instruction</b> | Store in a freezer at -20°C and avoid freeze-thaw cycles. |

### TARGET INFORMATION

|                           |                                      |
|---------------------------|--------------------------------------|
| <b>Gene ID</b>            | <a href="#">158506</a>               |
| <b>Gene Symbol</b>        | <a href="#">CBLL2</a>                |
| <b>Uniprot ID</b>         | <a href="#">CBLL2_HUMAN</a>          |
| <b>Immunogen</b>          | Recombinant protein of human ZNF645. |
| <b>Immunogen Region</b>   |                                      |
| <b>Specificity</b>        |                                      |
| <b>Immunogen Sequence</b> |                                      |



Western blot analysis of extracts of various cell lines, using ZNF645 rabbit polyclonal antibody (STJ11100504) at 1:1000 dilution. Secondary antibody: HRP-Goat Anti-rabbit IgG (H+L) at 1:10000 dilution. Lysates/proteins: 25µg per lane. Blocking buffer: 3% nonfat dry milk in TBST. Detection: ECL Basic Kit. Exposure time: 180s.

This product is suitable for in-vitro studies under the RESEARCH USE ONLY [RUO] licence. This product must not be used as for diagnostic or other medical purposes.  
 St John's Laboratory Ltd, Knowledge Dock Business Centre, University Way, London, E16 2RD | Tel: 0208 223 3081