

Anti-CCR2 antibody (STJ11100106)

STJ11100106

GENERAL INFORMATION

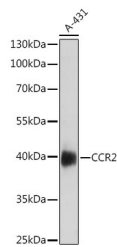
Product Type	Primary antibodies
Short Description	Rabbit polyclonal antibody anti-CCR2 is suitable for use in Western Blot and Immunofluorescence.
Applications	WB, IF
Host/Source	Rabbit
Reactivity	Human, Mouse

PRODUCT PROPERTIES

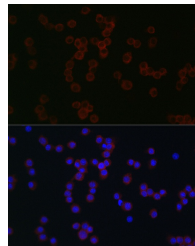
Clonality	Polyclonal
Clone ID	
Concentration	
Conjugation	Unconjugated
Purification	Affinity purification
Dilution Range	WB 1:500-1:2000 IF 1:50-1:200
Formulation	PBS containing 0.02% Sodium Azide, 50% Glycerol, pH7.3.
Isotype	IgG
Storage Instruction	Store in a freezer at -20°C and avoid freeze-thaw cycles.

TARGET INFORMATION

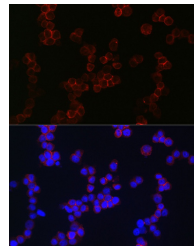
Gene ID	729230
Gene Symbol	CCR2
Uniprot ID	CCR2_HUMAN
Immunogen	A synthetic peptide of human CCR2.
Immunogen Region	
Specificity	
Immunogen Sequence	



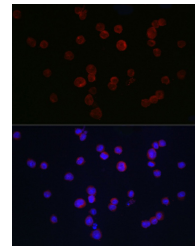
Western blot analysis of extracts of A-431 cells, using CCR2 antibody (STJ11100106) at 1:1000 dilution. Secondary antibody: HRP-Goat Anti-rabbit IgG (H+L) at 1:10000 dilution. Lysates/proteins: 25ug per lane. Blocking buffer: 3% nonfat dry milk in TBST. Detection: ECL Basic Kit. Exposure time: 90s.



Immunofluorescence analysis of Raw264.7 cells using CCR2 rabbit polyclonal antibody (STJ11100106) at dilution of 1:150 (40x lens). Blue: DAPI for nuclear staining.



Immunofluorescence analysis of THP-1 cells using CCR2 rabbit polyclonal antibody (STJ11100106) at dilution of 1:150 (40x lens). Blue: DAPI for nuclear staining.



Immunofluorescence analysis of U937 cells using CCR2 rabbit polyclonal antibody (STJ11100106) at dilution of 1:150 (40x lens). Blue: DAPI for nuclear staining.

This product is suitable for in-vitro studies under the RESEARCH USE ONLY [RUO] licence. This product must not be used as for diagnostic or other medical purposes.
St John's Laboratory Ltd, Knowledge Dock Business Centre, University Way, London, E16 2RD | Tel: 0208 223 3081