

## Anti-TUBB3 antibody [AMC0106] (STJ11100102)

STJ11100102

### GENERAL INFORMATION

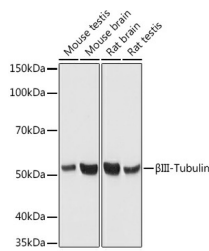
|                          |   |
|--------------------------|---|
| <b>Product Type</b>      | Primary antibodies  |
| <b>Short Description</b> | Mouse monoclonal antibody anti-Beta III-Tubulin is suitable for use in Western Blot, Immunohistochemistry and Immunofluorescence. |
| <b>Applications</b>      | WB, IHC, IF   |
| <b>Host/Source</b>       | Mouse   |
| <b>Reactivity</b>        | Human, Mouse, Rat   |

### PRODUCT PROPERTIES

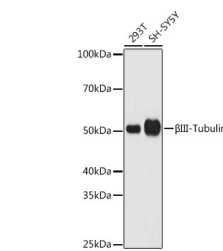
|                            |   |
|----------------------------|---|
| <b>Clonality</b>           | Monoclonal  |
| <b>Clone ID</b>            | AMC0106   |
| <b>Concentration</b>       |   |
| <b>Conjugation</b>         | Unconjugated  |
| <b>Purification</b>        | Affinity purification                                     |
| <b>Dilution Range</b>      | WB 1:500-1:2000<br>IHC 1:50-1:200<br>IF 1:50-1:200        |
| <b>Formulation</b>         | PBS containing 0.02% Sodium Azide, 50% Glycerol, pH7.3.   |
| <b>Isotype</b>             | IgG   |
| <b>Storage Instruction</b> | Store in a freezer at -20°C and avoid freeze-thaw cycles. |

### TARGET INFORMATION

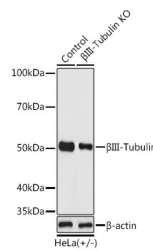
|                           |                                     |
|---------------------------|-------------------------------------|
| <b>Gene ID</b>            | 10381                               |
| <b>Gene Symbol</b>        | TUBB3                               |
| <b>Uniprot ID</b>         | TBB3_HUMAN                          |
| <b>Immunogen</b>          | Recombinant protein of human TUBB3. |
| <b>Immunogen Region</b>   |                                     |
| <b>Specificity</b>        |                                     |
| <b>Immunogen Sequence</b> |                                     |



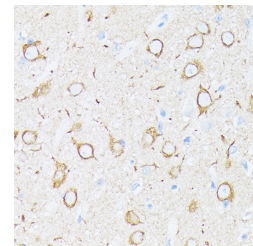
Western blot analysis of extracts of various cell lines, using Beta III-Tubulin antibody (STJ11100102) at 1:3000 dilution. Secondary antibody: HRP Goat Anti-mouse IgG (H+L) at 1:10000 dilution. Lysates/proteins: 25ug per lane. Blocking buffer: 3% nonfat dry milk in TBST. Detection: ECL Basic Kit. Exposure time: 1s.



Western blot analysis of extracts of various cell lines, using Beta III-Tubulin antibody (STJ11100102) at 1:3000 dilution. Secondary antibody: HRP Goat Anti-mouse IgG (H+L) at 1:10000 dilution. Lysates/proteins: 25ug per lane. Blocking buffer: 3% nonfat dry milk in TBST. Detection: ECL Basic Kit. Exposure time: 180s.



Western blot analysis of extracts from normal (control) and Beta III-Tubulin knockout (KO) HeLa cells, using Beta III-Tubulin antibody (STJ11100102) at 1:3000 dilution. Secondary antibody: HRP Goat Anti-mouse IgG (H+L) at 1:10000 dilution. Lysates/proteins: 25ug per lane. Blocking buffer: 3% nonfat dry milk in TBST. Detection: ECL Basic Kit. Exposure time: 180s.



Immunohistochemistry of paraffin-embedded rat brain using Beta III-Tubulin/Beta 3-Tubulin (STJ11100102) at dilution of 100 (40x lens).

This product is suitable for in-vitro studies under the RESEARCH USE ONLY [RUO] licence. This product must not be used as for diagnostic or other medical purposes.  
St John's Laboratory Ltd, Knowledge Dock Business Centre, University Way, London, E16 2RD | Tel: 0208 223 3081