

Anti-AKT1/AKT2/AKT3 antibody (STJ11100091)

STJ11100091

GENERAL INFORMATION

Product Type	Primary antibodies
Short Description	Rabbit polyclonal antibody anti-Pan-AKT is suitable for use in Western Blot, Immunohistochemistry, Immunofluorescence and Immunoprecipitation.
Applications	WB, IHC, IF, IP
Host/Source	Rabbit
Reactivity	Human, Mouse, Rat

PRODUCT PROPERTIES

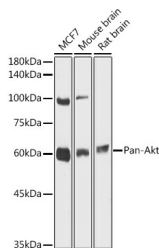
Clonality	Polyclonal
Clone ID	
Concentration	
Conjugation	Unconjugated
Purification	Affinity purification
Dilution Range	WB 1:500-1:1000 IHC 1:50-1:100 IF 1:50-1:100 IP 1:50-1:100
Formulation	PBS containing 0.02% Sodium Azide, 50% Glycerol, pH7.3.
Isotype	IgG
Storage	Store in a freezer at -20°C and avoid freeze-thaw cycles.
Instruction	

TARGET INFORMATION

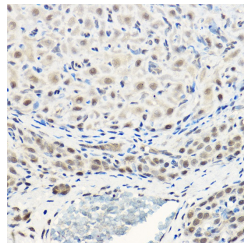
Gene ID [208](#)
[207](#)
[10000](#)
[AKT2](#)
[AKT1](#)
[AKT2_HUMAN](#)
[AKT1_HUMAN](#)
[AKT3_HUMAN](#)

<

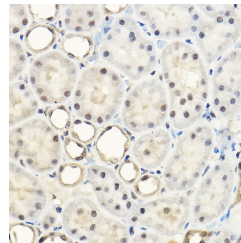
Immunogen A synthetic peptide of human AKT1/AKT2/AKT3
Immunogen Region
Specificity
Immunogen Sequence



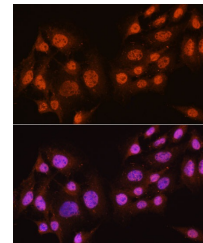
Western blot analysis of extracts of various cell lines, using Pan-Akt antibody (STJ11100091) at 1:1000 dilution. Secondary antibody: HRP Goat Anti-rabbit IgG (H+L) at 1:10000 dilution. Lysates/proteins: 25ug per lane. Blocking buffer: 3% nonfat dry milk in TBST. Detection: ECL Basic Kit. Exposure time: 30s.



Immunohistochemistry of paraffin-embedded rat ovary using Pan-Akt rabbit polyclonal antibody (STJ11100091) at dilution of 1:100 (40x lens). Perform high pressure antigen retrieval with 10 mM citrate buffer pH 6.0 before commencing with immunohistochemistry staining protocol.



Immunohistochemistry of paraffin-embedded rat kidney using Pan-Akt rabbit polyclonal antibody (STJ11100091) at dilution of 1:100 (40x lens). Perform high pressure antigen retrieval with 10 mM citrate buffer pH 6.0 before commencing with immunohistochemistry staining protocol.



Immunofluorescence analysis of C6 cells using AKT1/AKT2/AKT3 antibody (STJ11100091) at dilution of 1:100. Blue: DAPI for nuclear staining.