

Anti-PPP2R1B antibody (468-667) (STJ11100062)

STJ11100062

GENERAL INFORMATION

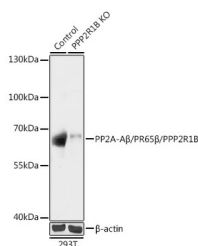
Product Type	Primary antibodies
Short Description	Rabbit polyclonal antibody anti-PPP2R1B (468-667) is suitable for use in Western Blot, Immunohistochemistry and Immunofluorescence.
Applications	WB, IHC, IF
Host/Source	Rabbit
Reactivity	Human, Mouse, Rat

PRODUCT PROPERTIES

Clonality	Polyclonal
Clone ID	
Concentration	
Conjugation	Unconjugated
Purification	Affinity purification
Dilution Range	WB 1:500-1:2000 IHC 1:50-1:200 IF 1:50-1:100
Formulation	PBS containing 0.02% Sodium Azide, 50% Glycerol, pH7.3.
Isotype	IgG
Storage Instruction	Store in a freezer at -20°C and avoid freeze-thaw cycles.

TARGET INFORMATION

Gene ID	5519
Gene Symbol	PPP2R1B
Uniprot ID	2AAB_HUMAN
Immunogen	Recombinant fusion protein containing a sequence corresponding to amino acids 468-667 of human PP2A-Abeta/PR65 Beta/PP2A-A Beta/PR65 Beta/PPP2R1B (NP_859050.1).
Immunogen Region	468-667
Specificity	
Immunogen Sequence	



Western blot analysis of extracts from normal (control) and PP2A-Abeta/PR65 Beta/PP2A-A Beta/PR65 Beta/PPP2R1B knockout (KO) 293T cells, using PP2A-Abeta/PR65 Beta/PP2A-A Beta/PR65 Beta/PPP2R1B antibody (STJ11100062) at 1:1000 dilution. Secondary antibody: HRP Coat Anti-rabbit IgG (H+L) at 1:10000 dilution. Lysates/proteins: 25ug per lane. Blocking buffer: 3% nonfat dry milk in TBST. Detection: ECL Basic Kit. Exposure time: 60s.

This product is suitable for in-vitro studies under the RESEARCH USE ONLY [RUO] licence. This product must not be used as for diagnostic or other medical purposes.
St John's Laboratory Ltd, Knowledge Dock Business Centre, University Way, London, E16 2RD | Tel: 0208 223 3081