

Anti-TFRC antibody (1-140) (STJ11100056)

STJ11100056

GENERAL INFORMATION

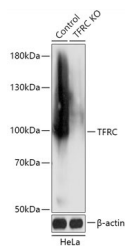
Product Type	Primary antibodies
Short Description	Rabbit polyclonal antibody anti-TFRC (1-140) is suitable for use in Western Blot and Immunohistochemistry.
Applications	WB, IHC
Host/Source	Rabbit
Reactivity	Human, Mouse, Rat

PRODUCT PROPERTIES

Clonality	Polyclonal
Clone ID	
Concentration	
Conjugation	Unconjugated
Purification	Affinity purification
Dilution Range	WB 1:500-1:2000 IHC 1:50-1:200
Formulation	PBS containing 0.02% Sodium Azide, 50% Glycerol, pH7.3.
Isotype	IgG
Storage Instruction	Store in a freezer at -20°C and avoid freeze-thaw cycles.

TARGET INFORMATION

Gene ID	7037
Gene Symbol	TFRC
Uniprot ID	TFR1_HUMAN
Immunogen	Recombinant fusion protein containing a sequence corresponding to amino acids 1-140 of human TFRC (NP_001121620.1).
Immunogen Region	1-140
Specificity	
Immunogen Sequence	



Western blot analysis of extracts from normal (control) and TFRC knockout (KO) HeLa cells, using TFRC antibody (STJ11100056) at 1:5000 dilution. Secondary antibody: HRP Coat Anti-rabbit IgG (H+L) at 1:10000 dilution. Lysates/proteins: 25ug per lane. Blocking buffer: 3% nonfat dry milk in TBST. Detection: ECL Basic Kit. Exposure time: 1s.

This product is suitable for in-vitro studies under the RESEARCH USE ONLY [RUO] licence. This product must not be used as for diagnostic or other medical purposes.
St John's Laboratory Ltd, Knowledge Dock Business Centre, University Way, London, E16 2RD | Tel: 0208 223 3081