

Anti-DIAPH1 antibody (1149-1263) (STJ11100054)

STJ11100054

GENERAL INFORMATION

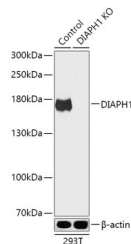
Product Type	Primary antibodies
Short Description	Rabbit polyclonal antibody anti-DIAPH1 (1149-1263) is suitable for use in Western Blot and Immunofluorescence.
Applications	WB, IF
Host/Source	Rabbit
Reactivity	Human, Mouse

PRODUCT PROPERTIES

Clonality	Polyclonal
Clone ID	
Concentration	
Conjugation	Unconjugated
Purification	Affinity purification
Dilution Range	WB 1:500-1:2000 IF 1:50-1:100
Formulation	PBS containing 0.02% Sodium Azide, 50% Glycerol, pH7.3.
Isotype	IgG
Storage Instruction	Store in a freezer at -20°C and avoid freeze-thaw cycles.

TARGET INFORMATION

Gene ID	1729
Gene Symbol	DIAPH1
Uniprot ID	DIAP1_HUMAN
Immunogen	Recombinant fusion protein containing a sequence corresponding to amino acids 1149-1263 of human DIAPH1 (NP_001073280.1).
Immunogen Region	1149-1263
Specificity	
Immunogen Sequence	



Western blot analysis of extracts from normal (control) and DIAPH1 knockout (KO) 293T cells, using DIAPH1 antibody (STJ11100054) at 1:1000 dilution. Secondary antibody: HRP Goat Anti-rabbit IgG (H+L) at 1:10000 dilution. Lysates/proteins: 25µg per lane. Blocking buffer: 3% nonfat dry milk in TBST. Detection: ECL Basic Kit. Exposure time: 10s.

This product is suitable for in-vitro studies under the RESEARCH USE ONLY [RUO] licence. This product must not be used as for diagnostic or other medical purposes.

St John's Laboratory Ltd, Knowledge Dock Business Centre, University Way, London, E16 2RD | Tel: 0208 223 3081