

Anti-LGALS1 antibody (1-135) (STJ11100013)

STJ11100013

GENERAL INFORMATION

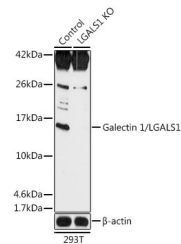
Product Type	Primary antibodies
Short Description	Rabbit polyclonal antibody anti-LGALS1 (1-135) is suitable for use in Western Blot.
Applications	WB
Host/Source	Rabbit
Reactivity	Human, Mouse, Rat

PRODUCT PROPERTIES

Clonality	Polyclonal
Clone ID	
Concentration	
Conjugation	Unconjugated
Purification	Affinity purification
Dilution Range	WB 1:1000-1:4000
Formulation	PBS containing 0.02% Sodium Azide, 50% Glycerol, pH7.3.
Isotype	IgG
Storage Instruction	Store in a freezer at -20°C and avoid freeze-thaw cycles.

TARGET INFORMATION

Gene ID	3956
Gene Symbol	LGALS1
Uniprot ID	LEG1_HUMAN
Immunogen	Recombinant fusion protein containing a sequence corresponding to amino acids 1-135 of human Galectin 1/Galectin 1/LGALS1 (NP_002296.1).
Immunogen Region	1-135
Specificity	
Immunogen Sequence	



Western blot analysis of extracts from normal (control) and Galectin 1/Galectin 1/LGALS1 knockout (KO) 293T cells, using Galectin 1/Galectin 1/LGALS1 antibody (STJ11100013) at 1:1000 dilution. Secondary antibody: HRP Goat Anti-rabbit IgG (H+L) at 1:10000 dilution. Lysates/proteins: 25ug per lane. Blocking buffer: 3% nonfat dry milk in TBST. Detection: ECL Basic Kit. Exposure time: 3min.

This product is suitable for in-vitro studies under the RESEARCH USE ONLY [RUO] licence. This product must not be used as for diagnostic or other medical purposes.
 St John's Laboratory Ltd, Knowledge Dock Business Centre, University Way, London, E16 2RD | Tel: 0208 223 3081