

## Anti-TARDBP antibody (STJ110985)

STJ110985

### GENERAL INFORMATION

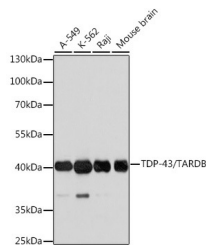
|                          |                                                                                                                          |
|--------------------------|--------------------------------------------------------------------------------------------------------------------------|
| <b>Product Type</b>      | Primary antibodies                                                                                                       |
| <b>Short Description</b> | Rabbit polyclonal antibody anti-TARDBP is suitable for use in Western Blot, Immunohistochemistry and Immunofluorescence. |
| <b>Applications</b>      | WB, IHC, IF                                                                                                              |
| <b>Host/Source</b>       | Rabbit                                                                                                                   |
| <b>Reactivity</b>        | Human, Mouse, Rat                                                                                                        |

### PRODUCT PROPERTIES

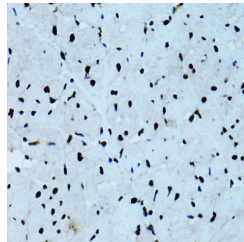
|                            |                                                           |
|----------------------------|-----------------------------------------------------------|
| <b>Clonality</b>           | Polyclonal                                                |
| <b>Clone ID</b>            |                                                           |
| <b>Concentration</b>       |                                                           |
| <b>Conjugation</b>         | Unconjugated                                              |
| <b>Purification</b>        | Affinity purification                                     |
| <b>Dilution Range</b>      | WB 1:500-1:2000<br>IHC 1:50-1:100<br>IF 1:50-1:100        |
| <b>Formulation</b>         | PBS containing 0.02% Sodium Azide, 50% Glycerol, pH7.3.   |
| <b>Isotype</b>             | IgG                                                       |
| <b>Storage Instruction</b> | Store in a freezer at -20°C and avoid freeze-thaw cycles. |

### TARGET INFORMATION

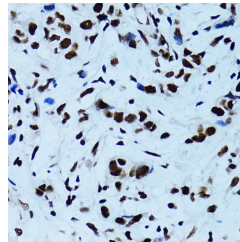
|                           |                                            |
|---------------------------|--------------------------------------------|
| <b>Gene ID</b>            | 23435                                      |
| <b>Gene Symbol</b>        | TARDBP                                     |
| <b>Uniprot ID</b>         | TADBP_HUMAN                                |
| <b>Immunogen</b>          | A synthetic peptide of human TDP-43/TARDBP |
| <b>Immunogen Region</b>   |                                            |
| <b>Specificity</b>        |                                            |
| <b>Immunogen Sequence</b> |                                            |



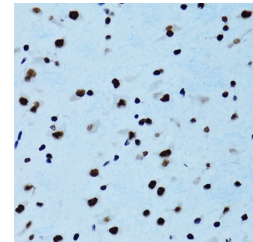
Western blot analysis of extracts of various cell lines, using TDP-43/TARDBP antibody (STJ110985) at 1:1000 dilution. Secondary antibody: HRP Goat Anti-rabbit IgG (H+L) at 1:10000 dilution. Lysates/proteins: 25ug per lane. Blocking buffer: 3% nonfat dry milk in TBST. Detection: ECL Basic Kit. Exposure time: 1s.



Immunohistochemistry of paraffin-embedded rat heart using TDP-43/TARDBP antibody (STJ110985) at dilution of 1:100 (40x lens). Perform microwave antigen retrieval with 10 mM PBS buffer pH 7. 2 before commencing with immunohistochemistry staining protocol.



Immunohistochemistry of paraffin-embedded human breast cancer using TDP-43/TARDBP antibody (STJ110985) at dilution of 1:100 (40x lens). Perform microwave antigen retrieval with 10 mM PBS buffer pH 7. 2 before commencing with immunohistochemistry staining protocol.



Immunohistochemistry of paraffin-embedded mouse brain using TDP-43/TARDBP antibody (STJ110985) at dilution of 1:100 (40x lens). Perform microwave antigen retrieval with 10 mM PBS buffer pH 7. 2 before commencing with immunohistochemistry staining protocol.

This product is suitable for in-vitro studies under the RESEARCH USE ONLY [RUO] licence. This product must not be used as for diagnostic or other medical purposes.  
St John's Laboratory Ltd, Knowledge Dock Business Centre, University Way, London, E16 2RD | Tel: 0208 223 3081