

## Anti-CDH2 antibody (450-550) (STJ110955)

STJ110955

### GENERAL INFORMATION

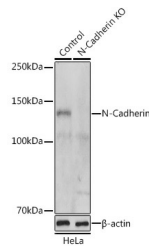
<b>Product Type</b>	Primary antibodies
<b>Short Description</b>	Rabbit polyclonal antibody anti-N-Cadherin (450-550) is suitable for use in Western Blot, Immunohistochemistry and Immunofluorescence.
<b>Applications</b>	WB, IHC, IF
<b>Host/Source</b>	Rabbit
<b>Reactivity</b>	Human, Mouse, Rat

### PRODUCT PROPERTIES

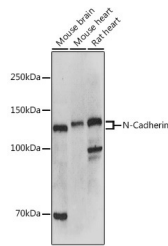
<b>Clonality</b>	Polyclonal
<b>Clone ID</b>	
<b>Concentration</b>	
<b>Conjugation</b>	Unconjugated
<b>Purification</b>	Affinity purification
<b>Dilution Range</b>	WB 1:500-1:2000 IHC 1:50-1:200 IF 1:50-1:200
<b>Formulation</b>	PBS containing 0.02% Sodium Azide, 50% Glycerol, pH7.3.
<b>Isotype</b>	IgG
<b>Storage Instruction</b>	Store in a freezer at -20°C and avoid freeze-thaw cycles.

### TARGET INFORMATION

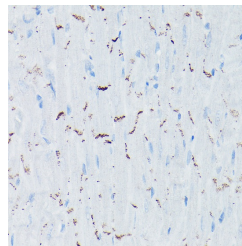
<b>Gene ID</b>	1000
<b>Gene Symbol</b>	CDH2
<b>Uniprot ID</b>	CADH2_HUMAN
<b>Immunogen</b>	A synthetic peptide corresponding to a sequence within amino acids 450-550 of human N-Cadherin (NP_001783.2).
<b>Immunogen Region</b>	450-550
<b>Specificity</b>	
<b>Immunogen Sequence</b>	



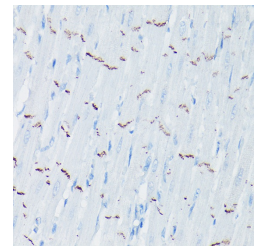
Western blot analysis of extracts from normal (control) and N-Cadherin knockout (KO) HeLa cells, using N-Cadherin antibody (STJ110955) at 1:500 dilution. Secondary antibody: HRP Goat Anti-rabbit IgG (H+L) at 1:10000 dilution. Lysates/proteins: 25ug per lane. Blocking buffer: 3% nonfat dry milk in TBST. Detection: ECL Basic Kit. Exposure time: 1s.



Western blot analysis of extracts of various cell lines, using N-Cadherin antibody (STJ110955) at 1:500 dilution. Secondary antibody: HRP Goat Anti-rabbit IgG (H+L) at 1:10000 dilution. Lysates/proteins: 25ug per lane. Blocking buffer: 3% nonfat dry milk in TBST. Detection: ECL Basic Kit. Exposure time: 1s.



Immunohistochemistry of paraffin-embedded mouse heart using N-Cadherin rabbit polyclonal antibody (STJ110955) at dilution of 1:50 (40x lens).



Immunohistochemistry of paraffin-embedded rat heart using N-Cadherin rabbit polyclonal antibody (STJ110955) at dilution of 1:50 (40x lens).

This product is suitable for in-vitro studies under the RESEARCH USE ONLY [RUO] licence. This product must not be used as for diagnostic or other medical purposes.

St John's Laboratory Ltd, Knowledge Dock Business Centre, University Way, London, E16 2RD | Tel: 0208 223 3081