

## Anti-Phospho-MAPK14-T180/Y182 antibody (STJ110862)

STJ110862

### GENERAL INFORMATION

<b>Product Type</b>	Primary antibodies
<b>Short Description</b>	Rabbit polyclonal antibody anti-Phospho-p38 MAPK-T180/Y182 is suitable for use in Western Blot and Immunofluorescence.
<b>Applications</b>	WB, IF
<b>Host/Source</b>	Rabbit
<b>Reactivity</b>	Human, Mouse, Rat

### PRODUCT PROPERTIES

<b>Clonality</b>	Polyclonal
<b>Clone ID</b>	
<b>Concentration</b>	
<b>Conjugation</b>	Unconjugated
<b>Purification</b>	Affinity purification
<b>Dilution Range</b>	WB 1:500-1:2000 IF 1:50-1:200
<b>Formulation</b>	PBS containing 0.02% Sodium Azide, 50% Glycerol, pH7.3.
<b>Isotype</b>	IgG
<b>Storage Instruction</b>	Store in a freezer at -20°C and avoid freeze-thaw cycles.

### TARGET INFORMATION

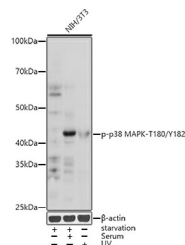
<b>Gene ID</b>	1432 5603 5600 MAPK14 MAPK13 MK14_HUMAN MK13_HUMAN MK11_HUMAN <
----------------	---

**Immunogen** A synthetic phosphorylated peptide around T180 & Y182 of human p38 MAPK (NP\_620581.1).

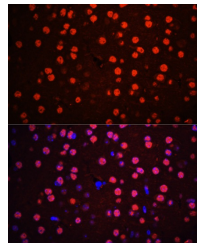
**Immunogen Region**

**Specificity**

**Immunogen Sequence**



Western blot analysis of extracts of NIH/3T3 cells, using Phospho-p38 MAPK-T180/Y182 antibody (STJ110862) at 1:1000 dilution. NIH/3T3 cells were treated by 10% FBS at 37 °C for 30 minutes after serum-starvation overnight. NIH/3T3 cells were treated by UV at room temperature for 15-30 minutes. Secondary antibody: HRP Goat Anti-rabbit IgG (H+L) at 1:10000 dilution. Lysates/proteins: 25ug per lane. Blocking buffer: 3% nonfat dry milk in TBST. Detection: ECL Basic Kit. Exposure time: 10s.



Immunofluorescence analysis of mouse brain using Phospho-p38 MAPK-T180/Y182 antibody (STJ110862) at dilution of 1:100. Blue: DAPI for nuclear staining.

This product is suitable for in-vitro studies under the RESEARCH USE ONLY [RUO] licence. This product must not be used as for diagnostic or other medical purposes.  
St John's Laboratory Ltd, Knowledge Dock Business Centre, University Way, London, E16 2RD | Tel: 0208 223 3081