

Anti-Phospho-NOS3-S1177 antibody (STJ110855)

STJ110855

GENERAL INFORMATION

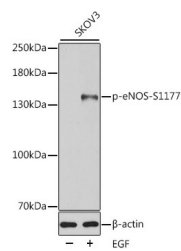
Product Type	Primary antibodies
Short Description	Rabbit polyclonal antibody anti-Phospho-eNOS-S1177 is suitable for use in Western Blot and Immunohistochemistry.
Applications	WB, IHC
Host/Source	Rabbit
Reactivity	Human, Mouse

PRODUCT PROPERTIES

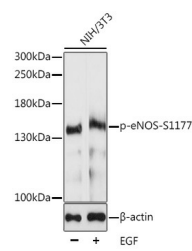
Clonality	Polyclonal
Clone ID	
Concentration	
Conjugation	Unconjugated
Purification	Affinity purification
Dilution Range	WB 1:500-1:2000 IHC 1:50-1:200
Formulation	PBS containing 0.02% Sodium Azide, 50% Glycerol, pH7.3.
Isotype	IgG
Storage Instruction	Store in a freezer at -20°C and avoid freeze-thaw cycles.

TARGET INFORMATION

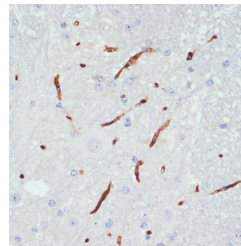
Gene ID	4846
Gene Symbol	NOS3
Uniprot ID	NOS3_HUMAN
Immunogen	A synthetic phosphorylated peptide around S1177 of human eNOS (NP_000594.2).
Immunogen Region	
Specificity	
Immunogen Sequence	



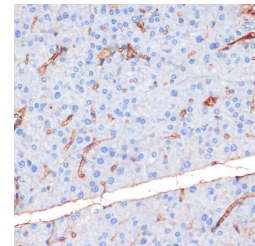
Western blot analysis of extracts of SKOV3 cells, using Phospho-eNOS-S1177 antibody (STJ110855). SKOV3 cells were treated by EGF. Secondary antibody: HRP Goat Anti-rabbit IgG (H+L) at 1:10000 dilution. Lysates/proteins: 25ug per lane. Blocking buffer: 3% BSA.



Western blot analysis of extracts of NIH/3T3 cells, using Phospho-eNOS-S1177 antibody (STJ110855) at 1:1000 dilution. NIH/3T3 cells were treated by EGF (100ng/mL) for 30 minutes after serum-starvation overnight. Secondary antibody: HRP Goat Anti-rabbit IgG (H+L) at 1:10000 dilution. Lysates/proteins: 25ug per lane. Blocking buffer: 3% BSA. Detection: ECL Enhanced Kit. Exposure time: 60s.



Immunohistochemistry of paraffin-embedded mouse spinal cord using Phospho-NOS3-S1177 antibody (STJ110855) at dilution of 1:200 (40x lens).



Immunohistochemistry of paraffin-embedded mouse pancreas using Phospho-NOS3-S1177 antibody (STJ110855) at dilution of 1:200 (40x lens).

This product is suitable for in-vitro studies under the RESEARCH USE ONLY [RUO] licence. This product must not be used as for diagnostic or other medical purposes.
St John's Laboratory Ltd, Knowledge Dock Business Centre, University Way, London, E16 2RD | Tel: 0208 223 3081