

Anti-SMEK1 antibody (395-594) (STJ110798)

STJ110798

GENERAL INFORMATION

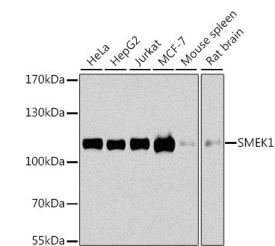
Product Type	Primary antibodies
Short Description	Rabbit polyclonal antibody anti-SMEK1 (395-594) is suitable for use in Western Blot, Immunohistochemistry and Immunofluorescence.
Applications	WB, IHC, IF
Host/Source	Rabbit
Reactivity	Human, Mouse, Rat

PRODUCT PROPERTIES

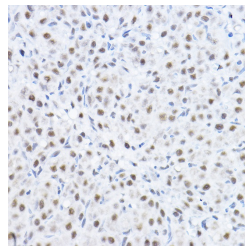
Clonality	Polyclonal
Clone ID	
Concentration	
Conjugation	Unconjugated
Purification	Affinity purification
Dilution Range	WB 1:500-1:2000 IHC 1:50-1:100 IF 1:50-1:200
Formulation	PBS containing 0.02% Sodium Azide, 50% Glycerol, pH7.3.
Isotype	IgG
Storage Instruction	Store in a freezer at -20°C and avoid freeze-thaw cycles.

TARGET INFORMATION

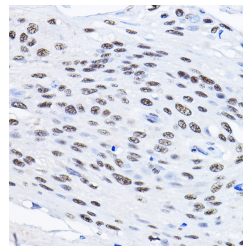
Gene ID	55671
Gene Symbol	PPP4R3A
Uniprot ID	P4R3A_HUMAN
Immunogen	Recombinant fusion protein containing a sequence corresponding to amino acids 395-594 of human SMEK1 (NP_001271210.1).
Immunogen Region	395-594
Specificity	
Immunogen Sequence	



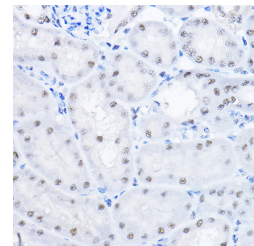
Western blot analysis of extracts of various cell lines, using SMEK1 antibody (STJ110798) at 1:1000 dilution. Secondary antibody: HRP Goat Anti-rabbit IgG (H+L) at 1:10000 dilution. Lysates/proteins: 25µg per lane. Blocking buffer: 3% nonfat dry milk in TBST. Detection: ECL Basic Kit. Exposure time: 10s.



Immunohistochemistry of paraffin-embedded rat ovary using SMEK1 rabbit polyclonal antibody (STJ110798) at dilution of 1:100 (40x lens).



Immunohistochemistry of paraffin-embedded human esophageal cancer using SMEK1 rabbit polyclonal antibody (STJ110798) at dilution of 1:100 (40x lens).



Immunohistochemistry of paraffin-embedded mouse kidney using SMEK1 rabbit polyclonal antibody (STJ110798) at dilution of 1:100 (40x lens).