

Anti-MARK1 antibody (560-700) (STJ110733)

STJ110733

GENERAL INFORMATION

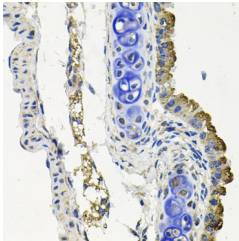
Product Type	Primary antibodies
Short Description	Rabbit polyclonal antibody anti-MARK1 (560-700) is suitable for use in Western Blot and Immunohistochemistry.
Applications	WB, IHC
Host/Source	Rabbit
Reactivity	Human, Mouse

PRODUCT PROPERTIES

Clonality	Polyclonal
Clone ID	
Concentration	
Conjugation	Unconjugated
Purification	Affinity purification
Dilution Range	WB 1:500-1:2000 IHC 1:50-1:200
Formulation	PBS containing 0.02% Sodium Azide, 50% Glycerol, pH7.3.
Isotype	IgG
Storage Instruction	Store in a freezer at -20°C and avoid freeze-thaw cycles.

TARGET INFORMATION

Gene ID	4139
Gene Symbol	MARK1
Uniprot ID	MARK1_HUMAN
Immunogen	Recombinant fusion protein containing a sequence corresponding to amino acids 560-700 of human MARK1 (NP_061120.3).
Immunogen Region	560-700
Specificity	
Immunogen Sequence	



Immunohistochemistry of paraffin-embedded mouse lung using MARK1 antibody (STJ110733) at dilution of 1:100 (40x lens).