

Anti-CR2 antibody (300-590) (STJ110705)

STJ110705

GENERAL INFORMATION

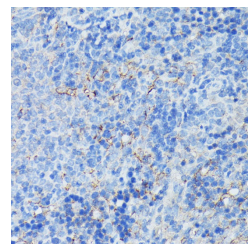
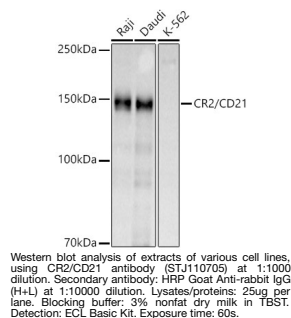
Product Type	Primary antibodies
Short Description	Rabbit polyclonal antibody anti-CR2 (300-590) is suitable for use in Western Blot, Immunohistochemistry and Immunofluorescence.
Applications	WB, IHC, IF
Host/Source	Rabbit
Reactivity	Human, Mouse, Rat

PRODUCT PROPERTIES

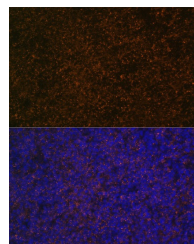
Clonality	Polyclonal
Clone ID	
Concentration	
Conjugation	Unconjugated
Purification	Affinity purification
Dilution Range	WB 1:500-1:2000 IHC 1:50-1:100 IF 1:50-1:100
Formulation	PBS containing 0.02% Sodium Azide, 50% Glycerol, pH7.3.
Isotype	IgG
Storage Instruction	Store in a freezer at -20°C and avoid freeze-thaw cycles.

TARGET INFORMATION

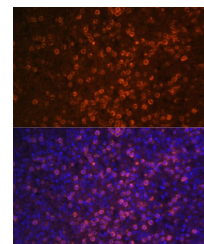
Gene ID	1380
Gene Symbol	CR2
Uniprot ID	CR2_HUMAN
Immunogen	Recombinant fusion protein containing a sequence corresponding to amino acids 300-590 of human CR2/CD21 (NP_001006659.1).
Immunogen Region	300-590
Specificity	
Immunogen Sequence	



Immunohistochemistry of paraffin-embedded rat spleen using CR2/CD21 antibody (STJ110705) at dilution of 1:100 (40x lens). Perform microwave antigen retrieval with 10 mM PBS buffer pH 7.2 before commencing with immunohistochemistry staining protocol.



Immunofluorescence analysis of rat spleen using CR2/CD21 Polyclonal Antibody (STJ110705) at dilution of 1:100 (40x lens). Blue: DAPI for nuclear staining.



Immunofluorescence analysis of human spleen using CR2/CD21 Polyclonal Antibody (STJ110705) at dilution of 1:100 (40x lens). Blue: DAPI for nuclear staining.